

Atodiad/Appendix VI (ii)

Llwybrau Graeanu Ardal Arfon Arfon Area Gritting Routes

Cylchdaith Graeanu Cibyn 1/Cibyn Gritting Route 1

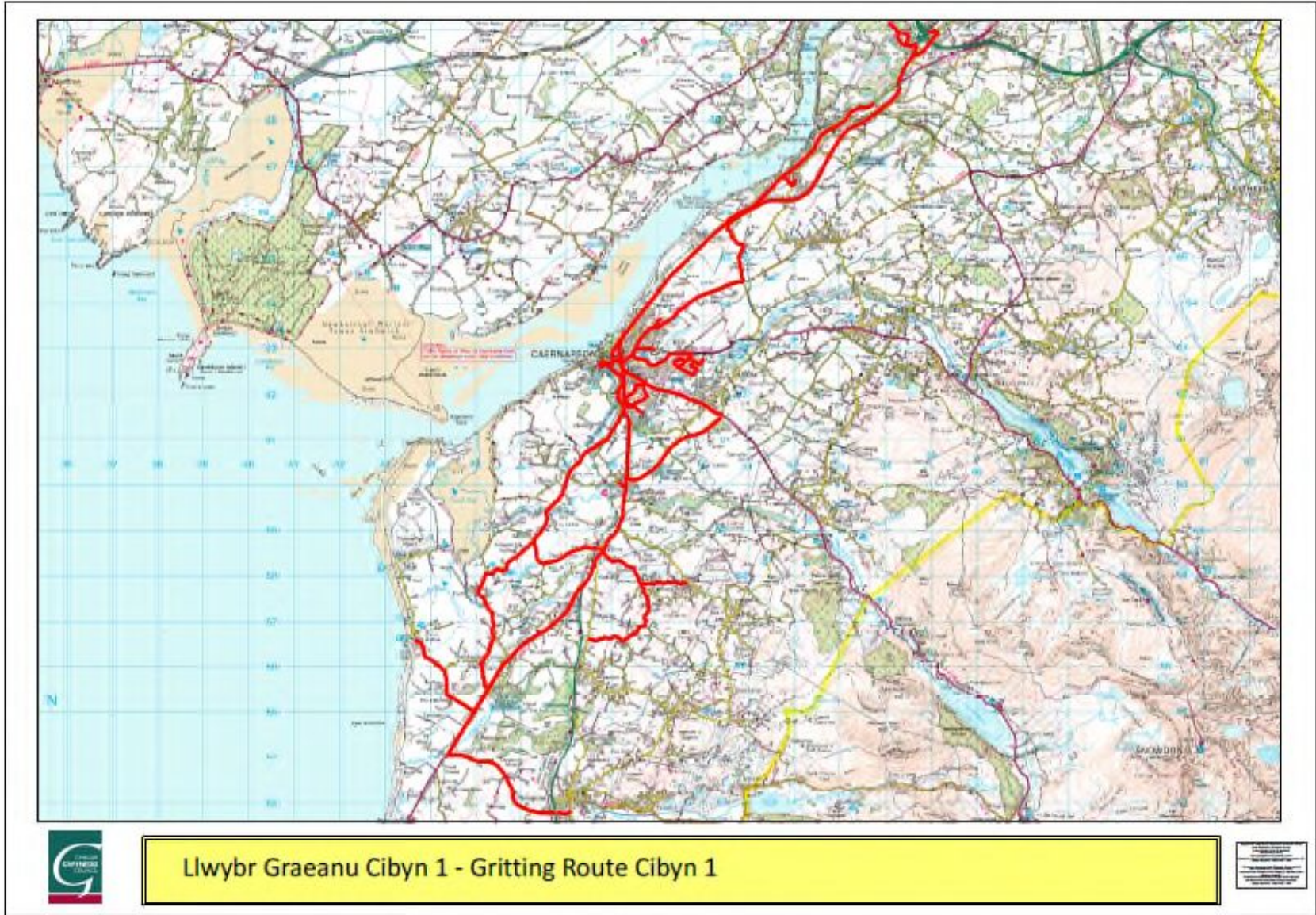
| Ffordd/Road | Disgrifiad o'r Rhan/Description of Section | Halenu/Salting (km) | Teithio Rhydd/Free Travel (km) |
|---------------|---|---------------------|--------------------------------|
| Di-ddos / u/c | Depo Cibyn - Ffordd Llanberis | 0.55 | |
| A4086 | Ffordd Llanberis - Cylchfan Penllyn gan gynnwys Cylchfan Cae Sêl | 1.85 | |
| A487 | Cylchfan Penllyn - Eagles - Cylchfan Dewi Sant - Cylchfan Penllyn | 1.67 | |
| A4086 | Cylchfan Penllyn - Cylchfan Cae Sêl | | 0.31 |
| B4366 | Cylchfan Cae Sêl - Cyffordd Maesincla | 0.15 | |
| Di-ddos / u/c | Cyffordd Maesincla - Ysgol Maesincla | 0.42 | |
| Di-ddos / u/c | Ysgol Maesincla - Cyffordd Ala Las | | 0.42 |
| B4366 | Cyffordd Ala Las - Cylchfan Canolfan Hamdden | 0.58 | |
| Di-ddos / u/c | Cylchfan Canolfan Hamdden - Ysgol y Gelli | 0.33 | |
| Di-ddos / u/c | Ysgol y Gelli - Cylchfan Canolfan Hamdden Arfon | | 0.31 |
| B4366 | Cylchfan Canolfan Hamdden Arfon - Cylchfan Tyddyn Hen | 2.32 | |
| Dos/Class 3 | Cylchfan Tyddyn Hen - Cylchfan Plas Menai | 1.27 | |
| A487 | Cylchfan Plas Menai | 0.18 | |
| Dos/Class 3 | Cylchfan Plas Menai - Cyffordd Tafarnygrisiau, Y Felinheli | 1.64 | |
| Di-ddos / u/c | Cyffordd Tafarnygrisiau - Y Wern | 0.30 | |
| Di-ddos / u/c | Y Wern - Cyffordd ger Cioŷ Ffôn Y Wern | 0.20 | |
| Di-ddos / u/c | Y Wern - Cyffordd Ffordd Caernarfon | | 0.50 |
| Dos/Class 3 | Cyffordd Tafarnygrisiau - Cyffordd Nant y Garth | 2.61 | |
| B4547 | Cyffordd Nant y Garth - Cylchfan Y Faenol | | 0.63 |
| A487 | Cylchfan Y Faenol - Cylchfan Parc Menai | 1.92 | |
| Di-ddos / u/c | Parc Menai | 1.43 | |
| Di-ddos / u/c | Parc Menai - Cylchfan Parc Menai | | 0.27 |
| A487 | Cylchfan Parc Menai - Cylchfan Treborth | | 0.51 |
| Dos/Class 3 | Cylchfan Treborth - Cylchfan Modurdy Dafarn Newydd | 0.23 | |
| Dos/Class 3 | Cylchfan Modurdy Dafarn Newydd - Allt Faenol | 0.76 | |
| A487 | Allt Faenol - Cylchfan Y Faenol | | 0.90 |
| A487 | Ffordd osgoi Y Felinheli | 5.27 | |
| A487 | Cylchfan Plas Menai - Cylchfan Dewi Sant | 2.63 | |
| A487 | Cylchfan Dewi Sant - Cylchfan Morrisons (Lôn tua'r Gogledd) | 0.21 | |
| A487 | Cylchfan Morrisons - Cylchfan Dewi Sant (Lôn tua'r De) | | 0.21 |
| A487 | Cylchfan Dewi Sant - Pontffordd Caernarfon - Gorsaf betrol Caer | 0.79 | |
| A487 | Gorsaf betrol Caer - Cyffordd Dinas, Llanwnda | 3.98 | |

Diweddarwyd/Updated – Hydref/October 2020

| | | | |
|----------------------|--|-------------|------|
| Dos/Class 3 | Cyffordd Dinas - Ysgol Felinwnda | 2.00 | |
| Dos/Class 3 | Ysgol Felinwnda - Cyffordd Dinas | | 2.00 |
| A487 | Cyffordd Dinas - Cylchfan Ffingar | 0.50 | |
| A487 | Cylchfan Ffingar - Cyffordd Menai View | | 0.40 |
| Dos/Class 3 | Cyffordd Menai View - Rhos Isaf | 1.20 | |
| Dos/Class 3 | Rhos Isaf - Rhostryfan | 1.01 | |
| Dos/Class 3 | Rhostryfan - Rhos Isaf | | 1.01 |
| Dos/Class 3 | Rhos Isaf - Maes Tryfan - Capel Bryn Rodyn | 2.48 | |
| Dos/Class 3 | Capel Bryn Rodyn - Cylchfan Ffingar | | 1.64 |
| A487 | Cylchfan Ffingar - Cylchfan Goat. | 0.60 | |
| A499 | Cylchfan Goat - Ffin Arfon/Dwyfor (Cyffordd Coed Hywel) | 4.68 | |
| Dos/Class 3 | Cyffordd Coed Hywel - Hen A487 Penygroes | 3.43 | |
| Dos/Class 3 | Hen A487 Penygroes - Cyffordd Coed Hywel | | 3.43 |
| A499 | Cyffordd Coed Hywel - Cyffordd Dinas Dinlle | | 1.15 |
| Dos/Class 3 | Cyffordd Dinas Dinlle – The Surfer | 2.22 | |
| Dos/Class 3 | The Surfer - Cyffordd Dinas Dinlle | | 2.22 |
| A499 | Cyffordd Dinas Dinlle - Cyffordd Llandwrog | | 0.57 |
| Dos/Class 3 | Cyffordd Llandwrog - Llandwrog | 0.60 | |
| Dos/Class 3 | Llandwrog - Saron - Llanfaglan -Caernarfon | 7.29 | |
| A487 | Pont Saint - Cylchfan Penllyn | | 1.16 |
| A4086 | Penllyn - Safle Bws Penllyn - Bont Bridd | 0.18 | |
| B4419 | Penllyn - Y Maes - o amgylch y Castell | 0.74 | |
| Di-ddos / u/c | Ffordd Santes Helen | 1.07 | |
| Dos/Class 3 | Cylchfan Pont Saint - Ysbyty Eryri | 0.13 | |
| Dos/Class 3 | Ysbyty Eryri - Cylchfan Pont Saint | | 0.13 |
| A487 | Cylchfan Pont Saint - Cylchfan Penllyn | | 1.22 |
| A4086 | Penllyn - Safle Bws Penllyn - Bont Bridd | | 0.18 |
| B4419 | Bont Bridd - Stryd Bangor - Cylchfan Dewi Sant | 0.42 | |
| A487 | Cylchfan Dewi Sant - Bontnewydd | | 3.29 |
| Dos/Class 3 | A487 - Ysgol Bontnewydd | 0.26 | |
| Dos/Class 3 | Ysgol Bontnewydd - A487 | | 0.26 |
| A487 | Cyffordd Ysgol Bontnewydd - Cylchfan Bontnewydd | | 0.37 |
| Dos/Class 3 | Bontnewydd - Caeathro | 2.60 | |
| A4085 | Caeathro - Ffordd Eryri, Caernarfon | 1.85 | |
| Di-ddos / u/c | Ffordd Eryri - Cae Corn Hir - Cefn Hendre | 1.47 | |
| A4085 | Ffordd Eryri - Cyffordd A487 | 0.48 | |

Diweddarwyd/Updated – Hydref/October 2020

| | | | |
|----------------------|--|-------------|-------|
| A487 | Gorsaf betrol Caer - Cylchfan Penllyn | | 0.59 |
| A4086 | Cylchfan Penllyn - Cibyn | | 1.85 |
| Di-ddos / u/c | Cibyn - Cyffordd ger Milfeddygfa Cibyn | | 0.10 |
| Di-ddos / u/c | Stad Ddiwydiannol Cibyn | 1.68 | |
| Di-ddos / u/c | Cibyn- Depo Cibyn | | 0.60 |
| | | 68.54 | 26.59 |



Diweddardwyd/Updated – Hydref/October 2020

Cylchdaith Graeanu Cibyn 2/Cibyn Gritting Route 2

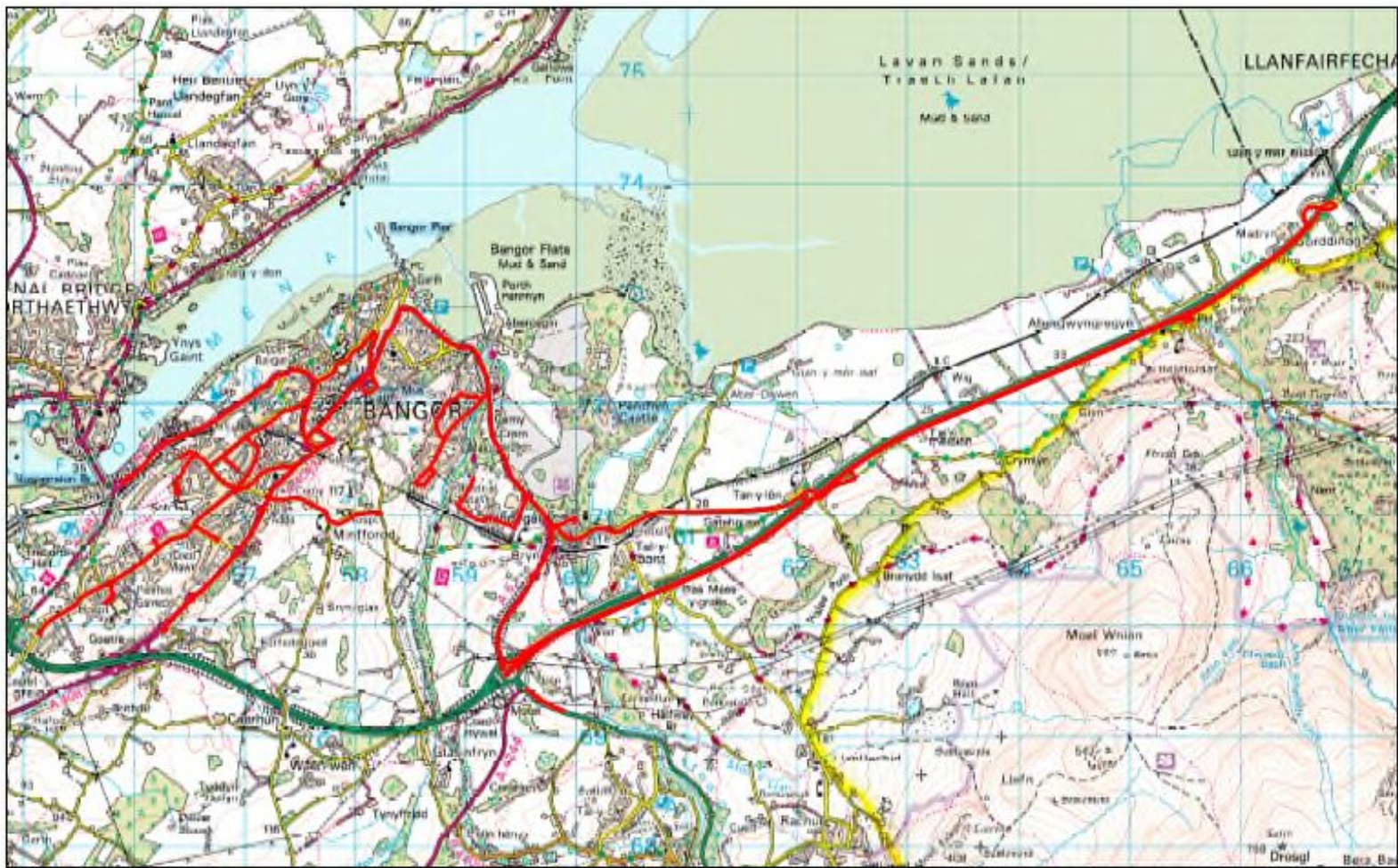
| Ffordd/Road | Disgrifiad o'r Rhan/Description of Section | Halenu/Salting (km) | Teithio Rhydd/Free Travel (km) |
|----------------------|--|---------------------|--------------------------------|
| Di-ddos / u/c | Depo Cibyn - Ffordd Llanberis | | 0.55 |
| A4086 | Stad Ddiwydiannol Cibyn - Pontrug | | 1.28 |
| Dos/Class 3 | Pontrug - Tyddyn Hen | | 1.56 |
| B4366 | Tyddyn Hen - Cylchfan Tŷ Mawr | | 6.09 |
| A4244 | Cylchfan Tŷ Mawr - Cylchfan Llys y Gwynt | | 4.71 |
| A55 | Llys y Gwynt - Ymgyfnewidfa Madryn | 8.32 | |
| A55 | Ymgyfnewidfa Madryn | 0.56 | |
| A55 | Ymgyfnewidfa Madryn - Abergwyngregyn | 1.60 | |
| Di-ddos / u/c | Abergwyngregyn (hyd at y Safle Bws) | 0.30 | |
| A55 | Abergwyngregyn - Llys y Gwynt | 6.91 | |
| A55 | Llys y Gwynt - Ffordd Caernarfon | | 3.72 |
| A4087 | Cylchfan Ffordd Caernarfon - Cylchfan Tesco | | 0.31 |
| A4087 | Cylchfan Tesco - Ffordd ymuno A55 | | 0.27 |
| A55 | Ffordd Caernarfon - Llys y Gwynt | | 3.72 |
| A55 | O dan Ymgyfnewidfa Llys y Gwynt | 1.00 | |
| A55 | Ymgyfnewidfa Llys y Gwynt - Ty'n Lon | | 2.53 |
| A55 | Ffordd ymuno tua'r Gorllewin Ty'n Lon | 0.86 | |
| A55 | Ty'n Lon - Ymgyfnewidfa Llys y Gwynt | | 3.00 |
| A55 | Ffordd ymadael tua'r Gorllewin Ymgyfnewidfa Llys y Gwynt | 0.50 | |
| A55 | Ymgyfnewidfa Llys y Gwynt - Ty'n Lon | | 3.46 |
| Dos/Class 3 | Ty'n Lon - Mynedfa Castell Penrhyn, Llandegai | 1.40 | |
| Di-ddos / u/c | Mynedfa Castell Penrhyn, Llandegai - Ysgol Llandegai | 0.24 | |
| Di-ddos / u/c | Ysgol Llandegai - Mynedfa Castell Penrhyn, Llandegai | | 0.24 |
| Dos/Class 3 | Mynedfa Castell Penrhyn, - Cylchfan Castell Penrhyn | 0.09 | |
| A5 | Cylchfan Castell Penrhyn - Llys y Gwynt | 1.46 | |
| A5 | Llys y Gwynt - Cylchfan Castell Penrhyn | | 1.41 |
| A5 | Cylchfan Castell Penrhyn - Cylchfan Stad Ddiwydiannol Llandegai | 0.36 | |
| Di-ddos / u/c | Stad Ddiwydiannol Llandegai | 1.12 | |
| Di-ddos / u/c | Stad Ddiwydiannol Llandegai | | 1.12 |
| A5 | Cylchfan Stad Ddiwydiannol Llandegai - Maesgeirchen | 1.00 | |
| Di-ddos / u/c | Rhodfa Penrhyn - Rhodfa'r Frenhines, Maesgeirchen | 1.34 | |
| Di-ddos / u/c | Rhodfa Penrhyn - Ffordd y Castell, Maesgeirchen | | 0.28 |

Diweddarwyd/Updated – Hydref/October 2020

| | | | |
|----------------------|---|-------------|------|
| Di-ddos / u/c | Ffordd y Castell - Ysgol Glancegin - Ffordd Tan y Bryn, Maesgeirchen | 0.73 | |
| Di-ddos / u/c | Maesgeirchen - A5 | | 0.09 |
| A5 | Maesgeirchen - Tan y Fynwent (Gorsaf Heddlu) | 1.95 | |
| Di-ddos / u/c | Tan y Fynwent (Gorsaf Bws) | 0.38 | |
| A5 | Ffordd Deiniol (Gorsaf Bws - Gorsaf Heddlu) | | 0.12 |
| A5 | Tan y Fynwent (Gorsaf Heddlu) - Gorsaf Rheilffordd - Ffordd Caergybi - Cylchfan Antelope | 3.91 | |
| A5 | Antelope - Cyffordd Ffordd y Coleg | | 2.02 |
| Di-ddos / u/c | Ffordd y Coleg - Lôn Cariadon | 1.05 | |
| A5 | Cylchfan Lôn Cariadon - Cylchfan Morrisons | | 1.61 |
| Di-ddos / u/c | Ffordd Ffriddoedd - Cyffordd Ysgol Tryfan | 0.95 | |
| Di-ddos / u/c | Ffordd Ffriddoedd - Ysgol Tryfan | 0.19 | |
| Di-ddos / u/c | Ysgol Tryfan - Ffordd Ffriddoedd | | 0.19 |
| Di-ddos / u/c | Cyffordd Ysgol Tryfan - Ffordd Belmont | 0.14 | |
| Di-ddos / u/c | Ffordd Belmont - Ysgol Friars | 0.88 | |
| Di-ddos / u/c | Ysgol Friars - Cyffordd Ffordd Ffriddoedd | | 0.66 |
| Dos/Class 3 | Ffordd Belmont - Trem Elidir | 0.36 | |
| Di-ddos / u/c | Trem Elidir | 0.57 | |
| Di-ddos / u/c | Ffordd Ffriddoedd - Morrisons | | 0.68 |
| A5 | Morrisons - Gorsaf Rheilffordd | | 0.37 |
| A5 | Gorsaf Rheilffordd - Cyffordd Ffordd Farrar | 0.14 | |
| A5 | Ffordd Farrar - Pont Rheilffordd | | 0.30 |
| A4087 | Pont Rheilffordd - Ffordd Hendrewen | 0.65 | |
| Dos/Class 3 | Ffordd Hendrewen | 1.14 | |
| Dos/Class 3 | Ffordd Hendrewen | | 1.14 |
| A4087 | Ffordd Hendrewen - Tesco | 1.54 | |
| A4087 | Tesco - Ffordd Penchwintan | | 1.74 |
| Dos/Class 3 | Ffordd Penchwintan - Ffordd Penrhos hyd at Coed Mawr | 1.10 | |
| Di-ddos / u/c | Coed Mawr | 0.26 | |
| Di-ddos / u/c | Coed Mawr | | 0.26 |
| Dos/Class 3 | Ffordd Penrhos | 0.49 | |
| Di-ddos / u/c | Ffordd Mynediad i Ysgol Y Garnedd | 0.09 | |
| Di-ddos / u/c | Ffordd Mynediad i Ysgol Y Garnedd | | 0.09 |
| Dos/Class 3 | Ffordd Penrhos | 0.45 | |
| Di-ddos / u/c | Ffordd Mynediad i Ysbyty Gwynedd | 0.37 | |
| Di-ddos / u/c | Ffordd Mynediad i Ysbyty Gwynedd | | 0.10 |

Diweddarwyd/Updated – Hydref/October 2020

| | | | |
|--------------------|---|-------------|-------|
| Dos/Class 3 | Ffordd Penrhos - Dafarn Newydd | 0.78 | |
| Dos/Class 3 | Ffordd Penrhos | | 0.76 |
| A487 | Allt Faenol - Ffordd osgoi Y Felinheli - Caernarfon | | 9.34 |
| A4086 | Penllyn - Cibyn | | 1.85 |
| Di-ddos / u/c | Cibyn - Depo Cibyn | | 0.55 |
| | | 45.15 | 55.81 |



Llwybr Graeanu Cibyn 2 - Gritting Route Cibyn 2

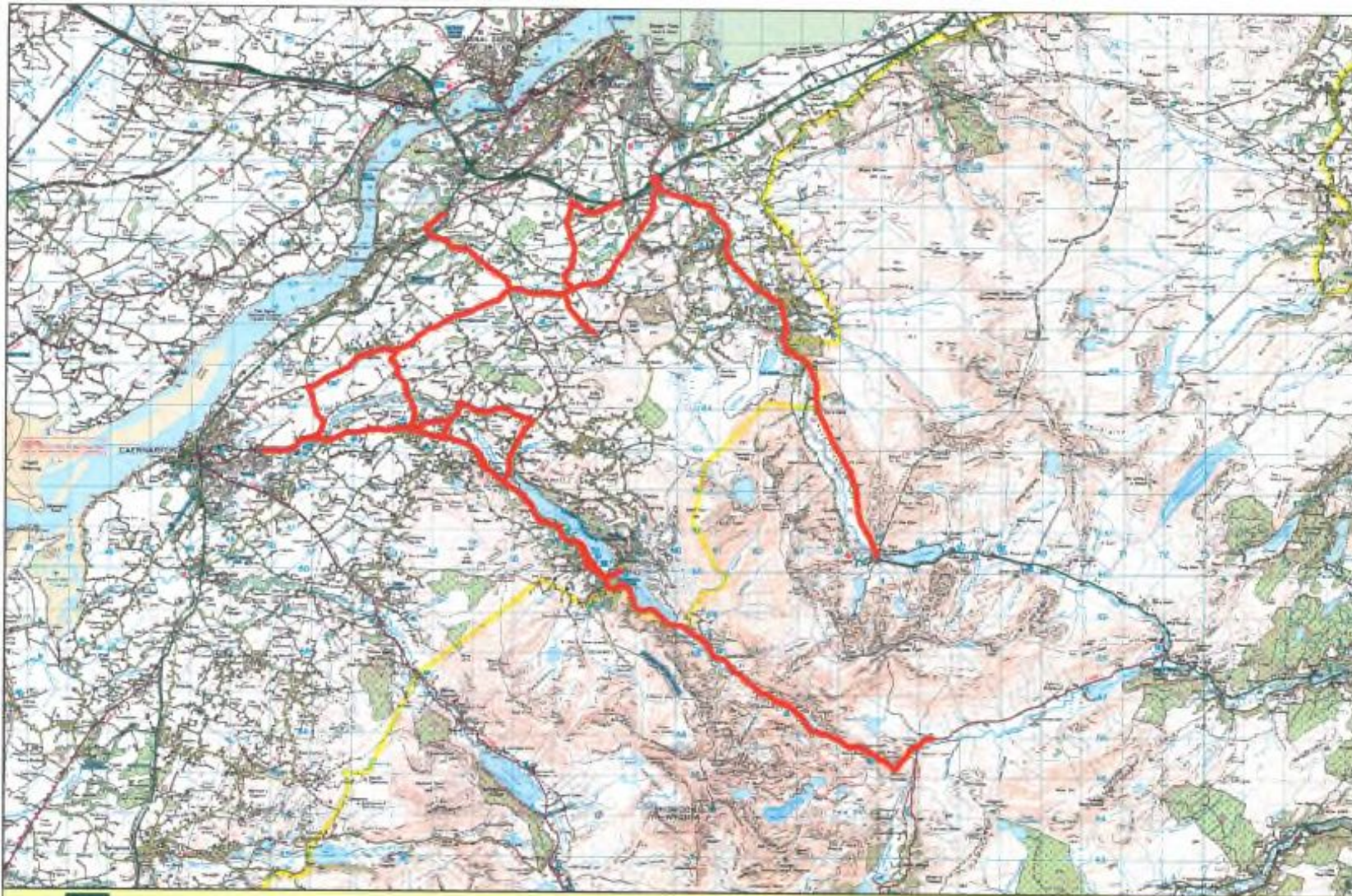
| | | | |
|----|----|----|-----|
| 1 | 2 | 3 | 4 |
| 5 | 6 | 7 | 8 |
| 9 | 10 | 11 | 12 |
| 13 | 14 | 15 | 16 |
| 17 | 18 | 19 | 20 |
| 21 | 22 | 23 | 24 |
| 25 | 26 | 27 | 28 |
| 29 | 30 | 31 | 32 |
| 33 | 34 | 35 | 36 |
| 37 | 38 | 39 | 40 |
| 41 | 42 | 43 | 44 |
| 45 | 46 | 47 | 48 |
| 49 | 50 | 51 | 52 |
| 53 | 54 | 55 | 56 |
| 57 | 58 | 59 | 60 |
| 61 | 62 | 63 | 64 |
| 65 | 66 | 67 | 68 |
| 69 | 70 | 71 | 72 |
| 73 | 74 | 75 | 76 |
| 77 | 78 | 79 | 80 |
| 81 | 82 | 83 | 84 |
| 85 | 86 | 87 | 88 |
| 89 | 90 | 91 | 92 |
| 93 | 94 | 95 | 96 |
| 97 | 98 | 99 | 100 |


Cylchdaith Graeanu Cibyn 3/Cibyn Gritting Route 3

| Ffordd/Road | Disgrifiad o'r Rhan/Description of Section | Halenu/Salting (km) | Teithio Rhydd/Free Travel (km) |
|----------------------|---|---------------------|--------------------------------|
| Di-ddos / u/c | Depo Cibyn - Ffordd Llanberis | | 0.55 |
| A4086 | Cyffordd Cibyn – cyffordd Lôn Glai (Felin Wen / Sopna) | 1.28 | |
| Dos/Class 3 | Lôn Glai – Clychfan Tyddyn Hen | 1.56 | |
| B4366 | Tyddyn Hen – cyffordd Ffordd Crawia, Bethel | 2.46 | |
| Dos/Class 3 | Ffordd Crawia – Sgwar Llanrug | 2.34 | |
| Dos/Class 3 | Station Road – Penbont Pub – A4086 Glyntwrog Pub | 1.41 | |
| A4086 | Glyntwrog Pub – Ffordd Glanmoelyn | 0.82 | |
| Di-ddos / u/c | Ffordd Glanmoelyn – Ffordd Glanffynnon – Lon Minffordd – Ffordd Glanmoelyn | 1.48 | |
| Di-ddos/ u/c | Ffordd Glanffynnon junction – A4086 | | 0.10 |
| A4086 | Sgwar Llanrug – Glyntwrog Pub | | 0.82 |
| A4086 | Glyntwrog Pub - Ffordd osgoi Cwm-y-Glo – cyffordd Stryd Fawr Cwm-y-Glo (Skate Park) | 1.87 | |
| Dos/Class 3 | Stryd Fawr Cwm-y-Glo | 0.62 | |
| A4086 | Ffordd osgoi Cwm-y-Glo | | 0.62 |
| A4086 | Cyffordd Cwm-y-Glo (Skate park) – cyffordd A4244 | 0.48 | |
| A4244 | A4086 – cyffordd Brynrefail (Cae chwarae) | 0.81 | |
| Dos/Class 3 | Stryd Fawr Brynrefail | 0.53 | |
| A4244 | Cyffordd deheuol Brynrefail – cyffordd Brynrefail (Cae chwarae) | | 0.43 |
| A4244 | Cyffordd Brynrefail (cae chwarae) – cyffordd Racca | 0.89 | |
| Dos/Class 3 | Cyffordd Racca – Ysgol Gynradd Penisarwaun – Tan Gaer – Pont Rhythallt – Penbont Pub | 2.51 | |
| Dos/Class 3 | Penbont Pub – A4086 Glyntwrog Pub | | 0.44 |
| A4086 | Glyntwrog Pub – cyffordd A4244 | | 2.35 |
| A4086 | Cyffordd A4244 – safle bws Canolfan Llanberis | 3.13 | |
| Di-ddos/ u/c | Ffordd Pont y Bala | 0.52 | |
| Di-ddos/ u/c | Ffordd Pont y Bala | | 0.52 |
| A4086 | Ffordd Pont y Bala – cyffordd Stryd Fawr | | 0.12 |
| Dos/Class 3 | Stryd Fawr, Llanberis | 1.10 | |
| A4086 | Cyffordd Stryd Fawr – Stad Ddiwydiannol Y Glyn | | 0.03 |
| Di-ddos/ u/c | Stad Ddiwydiannol Y Glyn | 0.31 | |
| Di-ddos/ u/c | Stad Ddiwydiannol Y Glyn | | 0.31 |

Diweddarwyd/Updated – Hydref/October 2020

| | | | |
|--------------------|---|--------------|-------|
| A4086 | Ffordd osgoi Llanberis – cyffordd Ffordd Pont y Bala | | 1.01 |
| A4086 | Cyffordd Ffordd Pont y Bala – Nant Peris – Pen y Grwyd – ffin Gwynedd/Conwy | 10.84 | |
| A4086 | Ffin Gwynedd/Conwy – Capel Curig | | 6.35 |
| A5 | Capel Curig – Ffin Gwynedd/Conwy (Ogwen Cottage) | | 8.22 |
| A5 | Ffin Gwynedd/Conwy (Ogwen Cottage) – Bethesda – J11 cylchfan Llŷ y Gwynt – cylchfan One Stop | 12.27 | |
| A4244 | A5 cylchfan One Stop – cyffordd Rhiwlas | 4.1 | |
| Dos/Class 3 | Ffordd Rhiwlas – Ysgol Rhiwlas – cyffordd Cae Glas | 1.30 | |
| Dos/Class 3 | Cyffordd Cae Glas – A4244 | | 1.30 |
| A4244 | Cyffordd Rhiwlas – cylchfan Groeslon Ty Mawr | 1.35 | |
| B4547 | Nant y Garth – cylchfan A487 Y Faenol | 3.38 | |
| B4547 | Cylchfan Y Faenol – cylchfan Ty Mawr | | 3.38 |
| B4366 | Cylchfan Ty Mawr – cyffordd Ffordd Crawia | 3.33 | |
| Dos/Class 3 | Ffordd Crawia – A4086 sgwar Llanrug | | 2.34 |
| A4086 | Sgwar Llanrug – cyffordd Lon Glai | 2.59 | |
| A4086 | Cyffordd Lon Glai – Depot Cibyn | | 1.83 |
| | | 63.28 | 30.72 |



 Llwybr Graeanu Cibyn 3 - Gritting Route Cibyn 3

Diweddarwyd/Updated – Hydref/October 2020

Cylchdaith Graeanu Cibyn 4/Cibyn Gritting Route 4

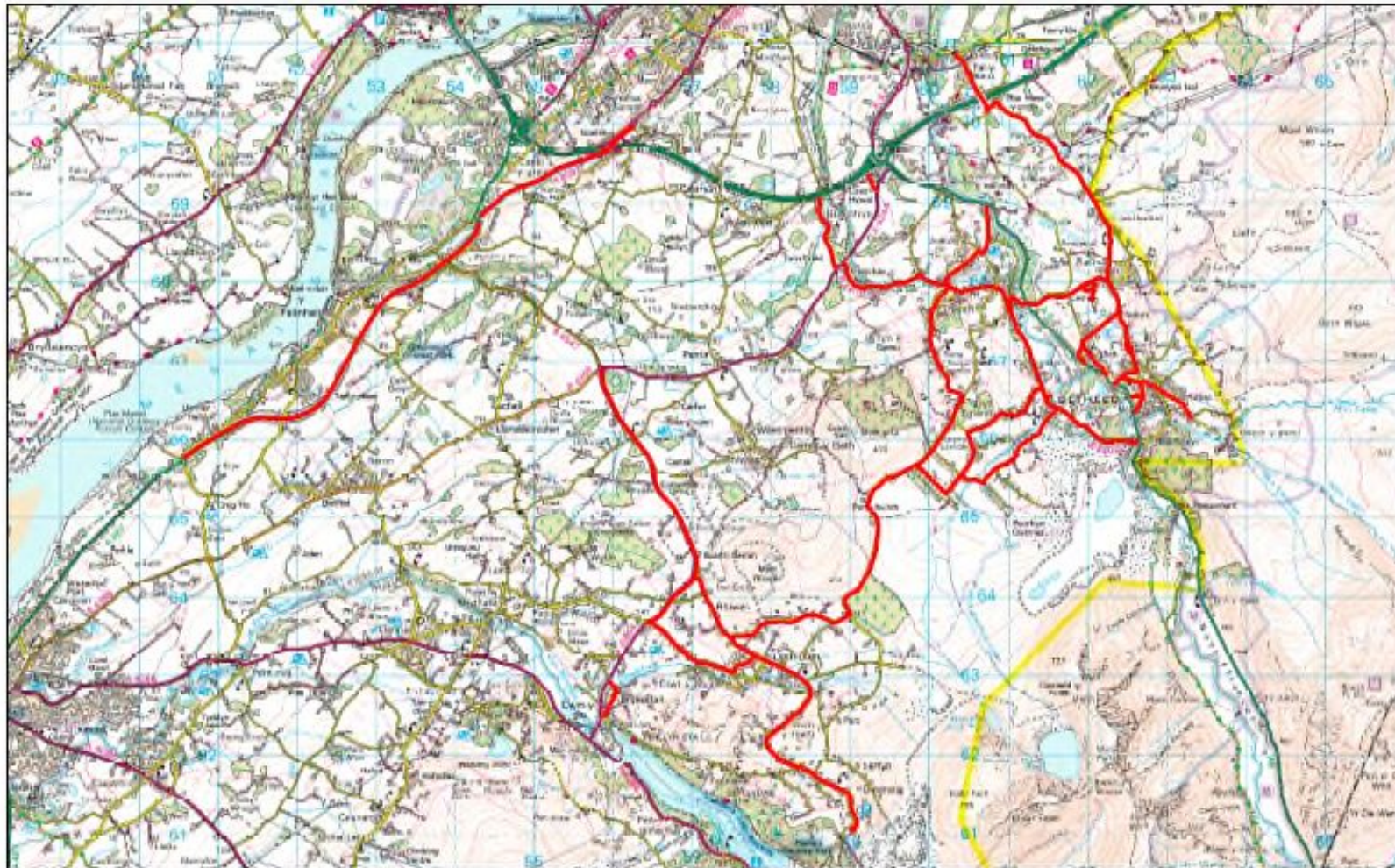
| Ffordd/Road | Disgrifiad o'r Rhan/Description of Section | Halenu/Salting (km) | Teithio Rhydd/Free Travel (km) |
|---------------------|--|---------------------|--------------------------------|
| Di-ddos/ u/c | Depo Cibyn - Ffordd Llanberis | | 0.55 |
| A4086 | Cibyn – Pontrug | | 1.28 |
| Dos/Class 3 | Pontrug – Tyddyn Hen | | 1.56 |
| Dos/Class 3 | Lon Crug, Llanfairisgaer | | 1.45 |
| A487 | Ffordd osgoi Y Felinheli | 5.27 | |
| A4087 | Cylchfan Y Faenol – Cylchfan Tesco | 2.45 | |
| A4087 | Cylchfan Tesco – Cylchfan Ffordd Caernarfon | 0.50 | |
| A4087 | Cylchfan Ffordd Caernarfon – Cylchfan Tesco | | 0.50 |
| A55 | Ffordd Caernarfon – Llys y Gwynt | | 3.80 |
| A5 | Llys y Gwynt – Castell Penrhyn | | 1.45 |
| Dos/Class 3 | Castell Penrhyn – Tal y Bont | | 0.67 |
| Dos/Class 3 | Tal y Bont - Llanllechid - Rachub - Stad Ddiwydiannol Pant Dreiniog | 4.88 | |
| Di-ddos/ u/c | Stad Ddiwydiannol Pant Dreiniog | 0.14 | |
| Di-ddos/ u/c | Stad Ddiwydiannol Pant Dreiniog | | 0.14 |
| Dos/Class 3 | Ffordd Ffrydlas – Ffordd Penybryn – Ysgol Penybryn – Ffordd Pant Glas | 0.48 | |
| Di-ddos/ u/c | Ffordd Pant Glas – Gerlan | 1.09 | |
| Di-ddos/ u/c | Gerlan – Garneddwen | | 0.84 |
| Dos/Class 3 | Garneddwen – Adwy'r Nant – A5 | 0.33 | |
| A5 | Adwy'r Nant – Ffordd Pant | | 0.17 |
| Dos/Class 3 | Ffordd Pant – Adwy'r Nant | 0.25 | |
| Dos/Class 3 | Adwy'r Nant – Ffordd Gerlan | | 0.16 |
| Di-ddos/ u/c | Ffordd Gerlan – Ffordd Pant Glas | | 0.25 |
| Di-ddo/ u/c | Ffordd Pant Glas | 0.14 | |
| A5 | Ffordd Pant Glas – Lon Newydd Coetmor | | 0.48 |
| Dos/Class 3 | Lon Newydd Coetmor – Ffordd Coetmor | 0.32 | |
| Di-ddos/ u/c | Ffordd Coetmor – Ysgol Dyffryn Ogwen – Rhes Victoria – A5 | 0.54 | |
| A5 | Rhes Victoria – Pont Twr | | 1.01 |
| B4409 | Pont Twr - Stad Ddiwydiannol Coed y Parc | 1.40 | |
| Di-ddos/ u/c | Stad Ddiwydiannol Coed y Parc | 0.10 | |
| Di-ddos/ u/c | Stad Ddiwydiannol Coed y Parc | | 0.10 |
| B4409 | Stad Ddiwydiannol Coed y Parc - Cyffordd Hen Durnpike | 1.19 | |

Diweddarwyd/Updated – Hydref/October 2020

| | | | |
|---------------------|---|-------------|------|
| Dos/Class 3 | Hen Durnpike – Bryn Bella – Maes Bleddyn | 1.24 | |
| Di-ddos/ u/c | Maes Bleddyn – Ysgol Llanllechid | 0.33 | |
| Di-ddos/ u/c | Ysgol Llanllechid – Maes Bleddyn | | 0.13 |
| Di-ddos/ u/c | Maes Bleddyn – Ffordd Llwyn Bleddyn | 0.21 | |
| Dos/Class 3 | Maes Bleddyn - Sgwâr Rachub | 0.28 | |
| Dos/Class 3 | Sgwâr Rachub – Ffordd Newydd Coetmor | | 0.42 |
| Dos/Class 3 | Ffordd Newydd Coetmor hyd at Cyffordd Ffordd Coetmor | 0.59 | |
| Dos/Class 3 | Ffordd Coetmor i A5 | | 0.32 |
| A5 | Ffordd Newydd Coetmor i Bryn Bella | | 1.08 |
| Dos/Class 3 | Bryn Bella i Hen Durnpike | | 0.41 |
| B4409 | Hen Durnpike - St Annes | | 1.06 |
| Dos/Class 3 | St Annes - Mynydd Llandegai - Ysgol Bodfeurig - Sling - Tregarth | 5.36 | |
| B4409 | Cyffordd Sling – A4244 Felin Hen | 1.61 | |
| Dos/Class 3 | Felin Hen – Glasinfryn – Waun Wen – Caerhun – A4244 Pentir | 4.76 | |
| A4244 | Cyffordd Pentir – Lon Coed Hywel | | 3.41 |
| Di-ddos/ u/c | Lon Coed Hywel at Safle Heddlu | 0.26 | |
| Di-ddos/ u/c | Safle Heddlu – A4244 | | 0.26 |
| A4244 | Lon Coed Hywel – A5 | | 0.33 |
| A5 | A5 Rhan Ddeuol – Cyffordd Tyddyn Iolyn | 0.72 | |
| A5 | Cyffordd Tyddyn Iolyn – Pont y Pandy | | 0.58 |
| Dos/Class 3 | Pont y Pandy – Tal y Cae – B4409 | 1.33 | |
| B4409 | Tal y Cae – Ysgol Tregarth – Hen Durnpike | 1.00 | |
| B4409 | Hen Durnpike – Allt Occar | | 1.40 |
| Dos/Class 3 | Allt Occar – Ffordd Hermon, Mynydd Llandegai | 1.70 | |
| Dos/Class 3 | Ffordd Hermon – Tan y Bwlch Jct | | 0.81 |
| Dos/Class 3 | Mynydd Llandegai - Deiniolen | 4.09 | |
| Dos/Class 3 | Deiniolen – Gallt y Foel – Dinorwig | 3.96 | |
| Dos/Class 3 | Dinorwig – Gallt y Foel – Deiniolen | | 3.96 |
| Dos/Class 3 | Deiniolen – Beran | 0.95 | |
| A4244 | Cyffordd Beran – Cyffordd Racca | 0.84 | |
| Dos/Class 3 | Cyffordd Racca – Clwt y Bont - Deiniolen | 1.63 | |
| Dos/Class 3 | Deiniolen – Cyffordd Beran | | 1.29 |
| A4244 | Beran - Tŷ Mawr | 2.94 | |
| B4366 | Tŷ Mawr - Tyddyn Hen | | 5.65 |

Diweddarwyd/Updated – Hydref/October 2020

| | | | |
|--------------|----------------------|-------|-------|
| Dos/Class 3 | Tyddyn Hen – Pontrug | | 1.56 |
| A4086 | Pontrug – Cibyn | | 1.28 |
| Di-ddos/ u/c | A4086 – Depo Cibyn | | 0.55 |
| | | 52.88 | 38.91 |



Llwybr Graeanu Cibyn 4 - Gritting Route Cibyn 4

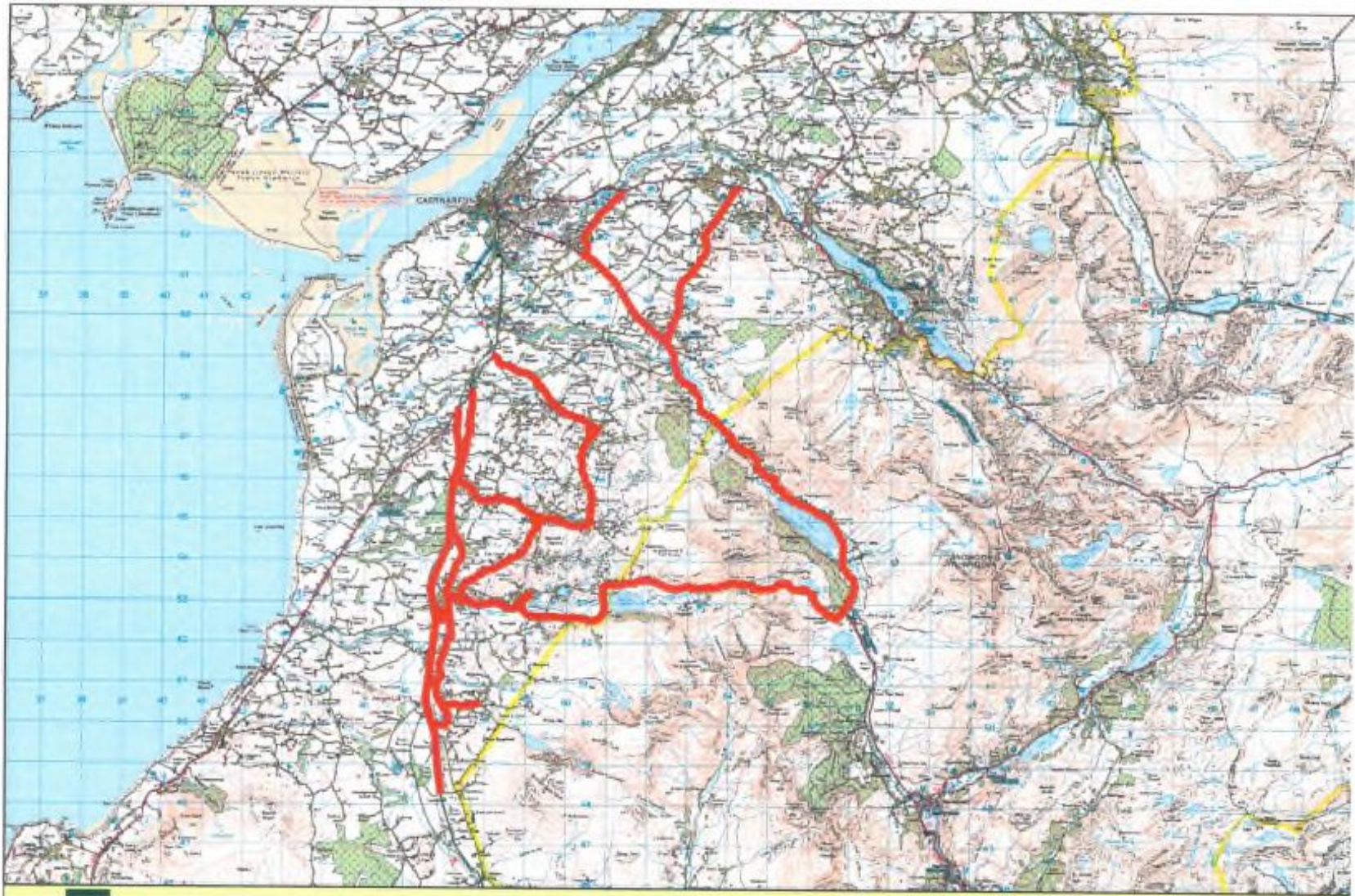


Cylchdaith Graeanu Cibyn 5/Cibyn Gritting Route 5

| Ffordd/Road | Disgrifiad o'r rhan/Description of section | Halenu/Salting (km) | Teithio Rhydd/Free Travel (km) |
|----------------------|--|---------------------|--------------------------------|
| Di-ddos / u/c | Depo Cibyn - Ffordd Llanberis | | 0.55 |
| A4086 | Ffordd Llanberis - Cylchfan Penllyn | | 1.70 |
| A487 | Caernarfon - Cylchfan Goat, Llanwnda. | | 5.39 |
| A487 | Cylchfan Goat ,Llanwnda - Cefn Graeanog (Terfyn Arfon / Dwyfor) | 9.65 | |
| A487 | Cefn Graeanog (Terfyn Arfon / Dwyfor) - Cyffordd Nasareth | | 3.46 |
| Dos/Class 3 | A487 - Nasareth - Nebo - Ysgol Nebo | 1.93 | |
| Dos/Class 3 | Ysgol Nebo - Nebo - Nasareth | | 0.99 |
| Dos/Class 3 | Nasareth - Llanllyfni - Stad Ddiwydiannol Penygroes | 2.52 | |
| Di-ddos / u/c | Stad Ddiwydiannol Penygroes | 0.61 | |
| Di-ddos / u/c | Stad Ddiwydiannol Penygroes | | 0.61 |
| Dos/Class 3 | Stad Ddiwydiannol Penygroes - Inigo Jones | 2.40 | |
| Dos/Class 3 | Inigo Jones - Heol Buddug, Penygroes | | 2.11 |
| B4418 | Heol Buddug - Cyffordd Ffordd Y Brenin | 0.37 | |
| Dos/Class 3 | Ffordd Y Brenin – Groesffordd Carmel | 3.02 | |
| Dos/Class 3 | Carmel - Y Groeslon | 2.04 | |
| Di-ddos / u/c | Ysgol Y Groeslon | 0.22 | |
| Di-ddos / u/c | Ysgol Y Groeslon | | 0.22 |
| Dos/Class 3 | Ysgol Y Groeslon - Cylchfan Y Groeslon (A487) | 0.65 | |
| Dosbarth 3 | Hen A487 Y Groeslon - Dolydd - Llanwnda | 2.33 | |
| A487 | Llanwnda - Ffrwd Cae Du | | 1.16 |
| Dos/Class 3 | Ffrwd Cae Du - Rhostryfan - Rhosgadfan - Y Fron | 6.57 | |
| Dos/Class 3 | Y Fron - Croesffordd Carmel | 1.25 | |
| Dos/Class 3 | Croesffordd Carmel - Llidiart y Mynydd | | 0.85 |
| Di-ddos / u/c | Llidiart y Mynydd - Maes Hyfryd | 0.35 | |
| Dos/Class 3 | Carmel - Penygroes | | 2.76 |
| B4418 | Penygroes - Talysarn | 1.54 | |
| Di-ddos / u/c | Talysarn | 0.44 | |
| Di-ddos / u/c | Talysarn | | 0.44 |
| B4418 | Talysarn - Nantlle - Rhyd Ddu | 9.68 | |
| A4085 | Rhyd Ddu - Betws Garmon - Waunfawr – Cylchfan Caeathro | 11.80 | |
| Dos/Class 3 | Caeathro - Pontrug | 1.97 | |

Diweddarwyd/Updated – Hydref/October 2020

| | | | |
|--------------------|-------------------------------------|-------------|-------|
| A4086 | Pontrug - Llanrug | | 2.98 |
| Dos/Class 3 | Llanrug - Ceunant - Waunfawr | 4.47 | |
| A4085 | Waunfawr - Cylchfan Caeathro | | 3.05 |
| Dos/Class 3 | Caeathro - Pontrug | | 1.97 |
| A4086 | Pontrug - Cibyn | | 1.28 |
| Di-ddos / u/c | A4086 - Depo Cibyn | | 0.55 |
| | | 63.81 | 29.07 |



Llwybr Graeanu Cibyn 5 - Gritting Route Cibyn 5

Diweddarwyd/Updated – Hydref/October 2020

Atodiad/Appendix VI (iii)

Llwybrau Graeanu Dwyfor Dwyfor Gritting Routes

Cylchdeithiau Blaenoriaeth Cyntaf

First Priority Routes

Cylchdaith Prif Flaenoriaeth/Main Priority Route - D1/1

| Ffordd/Road | Disgrifiad o'r Rhan/Description of Section | Halenu/Salting (km) | Teithio Rhydd/Free Travel (km) |
|------------------|--|---------------------|--------------------------------|
| A497 | Afonwen - Sgwar Criccieth | | 6.6 |
| A498 | Sgwar Criccieth - Cylchfan Porthmadog | 5.8 | |
| A498 | Cylchfan Porthmadog - Cyffordd Penamser | | 1.6 |
| A498 | Cyffordd A498 Penamser - Cyffordd A487 Tremadog | 0.6 | |
| A498 | A487 Tremadog - Beddgelert – Pengwryd | 23.3 | |
| A498 | Pengwryd - Beddgelert | | 12.2 |
| A4085 | Beddgelert - Rhyd Ddu at Cyffordd yr B4418 | 5.8 | |
| A4085/A498 | Rhyd Ddu - Bont Aberglaslyn | | 8.2 |
| A4085 | Bont Aberglaslyn - Nantmor - Garreg - Cyffordd yr A498 Prenteg | 9.4 | |
| Amrywiol/Various | Prenteg - Cylchfan Tremadog - Cyffordd Penamser - Pentrefelin - Criccieth - Depo Afonwen | | 18.1 |
| | | 44.9 | 46.7 |



Diweddarwyd/Updated – Hydref/October 2020

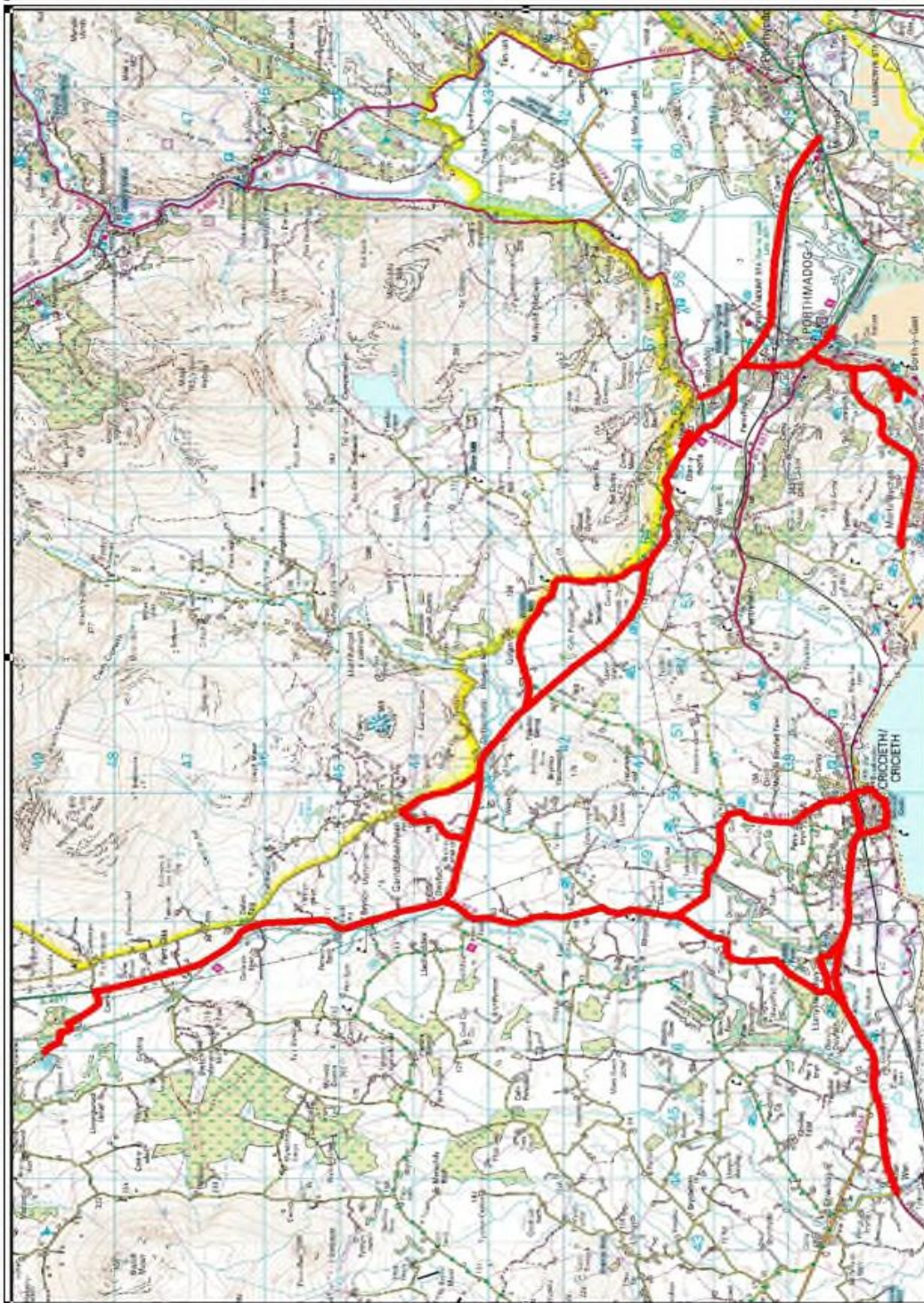


Cylchdaith Prif Flaenoriaeth/Main Priority Route - D1/1

Cylchdaith Prif Flaenoriaeth/Main Priority Route - D1/2

| Ffordd/Road | Disgrifiad o'r Rhan/Description of Section | Halenu/Salting (km) | Teithio Rhydd/Free Travel (km) |
|---------------------|--|---------------------|--------------------------------|
| Dos/Class 3 | Afonwen - Cylchfan A497 Afonwen | | 0.3 |
| A497 | Cylchfan A497 Afonwen - Sgwar Criccieth | 6.3 | |
| B4411 | Sgwar Criccieth - Cyffordd A487 Glandwyfach | 7.1 | |
| A487 | Cyffordd A487 Glandwyfach - Caerau (ffin Dwyfor), Pantglas | 5 | |
| A487 | Caerau (ffin Dwyfor) - Cyffordd A487 Glandwyfach | | 5.1 |
| A487 | Cyffordd Glandwyfach - Cylchfan Minffordd (sicrhau graeanu'r holl gylchdro) | 13.5 | |
| A497 | Cyffordd Minffordd - Swyddfa'r Dreth Incwm, Porthmadog | | 3.2 |
| A497 | Swyddfa'r Dreth Incwm - Cyffordd Swyddfa'r Post, Porthmadog | 0.5 | |
| Dos/Class 3 | Swyddfa'r Post - Morfa Bychan | 3.7 | |
| Dos/Class 3 | Morfa Bychan - Cyffordd Borth y Gest | | 3.2 |
| Di-ddos/ u/c | Cyffordd Borth y Gest - Ysgol Borth y Gest (Sicrhau bod oll o gyffordd Borth y Gest wedi ei drin) | 1 | |
| Di-ddos/ u/c | Ysgol Borth y Gest - Stad Tan y Foel, Borth y Gest | | 0.1 |
| Di-ddos/ u/c | Stad Tan y Foel | 0.2 | |
| Di-ddos/ u/c | Stad Tan y Foel - Cyffordd Swyddfa'r Post, Porthmadog | | 0.5 |
| A497 | Cyffordd Swyddfa'r Post - Cylchfan Porthmadog | 1.6 | |
| A4971 | Cylchfan Porthmadog - Cylchfan Bodawen (sicrhau graeanu'r holl gylchdro) | 0.8 | |
| A487 | Cylchfan Bodawen - Cyffordd Stryd yr Eglwys, Tremadog | | 0.4 |
| Dos/Class 3 | Cyffordd Stryd yr Eglwys, Tremadog - Cyffordd A498, Sgwar Tremadog | 0.4 | |
| Dos/Class 3 | Cyffordd A498, Tremadog - Cylchfan A487, Tremadog | | 0.4 |

| | | | |
|----------------------------|--|-------------|-------------|
| A487 | Cylchfan A487, Tremadog - Cyffordd Ysbyty Alltwen | | 0.4 |
| GIG Cymru/NHS Wales | Ffordd breifat at Ysbyty Alltwen | 0.5 | |
| GIG Cymru/NHS Wales | Ysbyty Allt Wen - Cyffordd A487 | | 0.4 |
| A487 | Cyffordd A487 - Cyffordd Golan | | 2.0 |
| Dos/Class 3 | Golan Loop - Cyffordd A487 Ysgubor Gerrig | 3.5 | |
| A487 | Cyffordd A487 Ysgubor Gerrig - Cyfnewidfa Ffôn (telephone exchange) | | 1.3 |
| Dos/Class 3 | Cyfnewidfa Ffôn - Pentre Garndolbenmaen - Cyffordd A487, Noddfa | 2.3 | |
| A487 | Cyffordd Noddfa - Cyffordd Glandwyfach | | 0.9 |
| B4411 | Cyffordd Glandwyfach - Cyffordd Ynys Heli, Rhoslan | | 3.4 |
| Dos/Class 3 | Cyffordd Ynys Heli Rhoslan - Cyffordd Ael y Bryn, Llanystumdwy | 2.6 | |
| Dos /Class 3 - A497 | Ael y Bryn, Llanystumdwy - Sgwar Criccieth | | 3.5 |
| Di-ddos / u/c | Sgwar Criccieth - Marine - Cyffordd Lôn Fel A497 | 1.3 | |
| A497 | Cyffordd Lôn Fel A497 - Cyffordd Pentref Llanystumdwy | | 1.7 |
| Dos/Class 3 | Penterf Llanystumdwy - Cyffordd Tyddyn Siannel | 1.1 | |
| A497 + Dos/Class 3 | Cyffordd Tyddyn Siannel - Depo Afonwen | | 3.4 |
| | | 51.4 | 30.2 |



Cylchdaith Prif Flaenoriaeth/Main Priority Route - D1/2

Diweddardwyd/Updated – Hydref/October 2020

Cylchdaith Prif Flaenoriaeth/Main Priority Route – D1/3

| Ffordd/Road | Disgrifiad o'r Rhan/Description of Section | Halenu/Salting (km) | Teithio Rhydd/Free Travel (km) |
|----------------------|---|---------------------|--------------------------------|
| Dos/Class 3 | Afonwen - Cylchfan A497 | 0.3 | |
| A497 | A497 - Rodyn, Abererch (Sicrhau graeanu'r 4 Cylchfan) | 4.9 | |
| Dos/Class 3 | Pentref Abererch | 1.2 | |
| A497 | Bodreiala - Rodyn | | 0.9 |
| A497 - A499 | Rodyn drwy Bwllheli - Roundabout Pulrose (Sicrhau graeanu'r 4 Cylchfan) | 3.9 | |
| A499 | Cylchfan Pulrose i gyffordd Ffordd Caerdydd | | 0.9 |
| Di-ddos / u/c | Ffordd Caerdydd - Ffordd y Mela - Ffordd y Cob | 2.3 | |
| A499 | Pencob - Cyffordd Stryd Fawr a Lôn Dywod | | 0.3 |
| Di-ddos / u/c | Stryd Fawr - Whitehall - Allt Salem - Coleg - Cyffordd Lon Pengwern, Efailnewydd | 1.9 | |
| Di-ddos/ u/c | Cyffordd Lôn Pengwern, Efailnewydd - Whitehall | | 1.6 |
| Di-ddos/ u/c | Whitehall - Maes | 0.2 | |
| A499 | Maes - Cylchdro Black Lion | | 0.5 |
| A499 | Cylchdro Black Lion - Y Ffor | 4.5 | |
| B4354 | Y Ffor – Pandy Garage | 5.6 | |
| A497 | Pandy Garage A497 - Roundabout Afonwen A497 - Mynedfa Depo Afonwen | | 1.4 |
| Dos/Class 3 | Mynedfa Depo Afonwen - B4354 Cyffordd Chwilog | 0.7 | |
| B4354 | Cyffordd B4354 Chwilog - Cyffordd Llanarmon | | 1 |
| Dos/Class 3 | Cyffordd B4354 Llanarmon – Ty Newydd – Llanybi – Lon Gwernallt – Llanarmon | 6.3 | |
| Dos/Class 3 | Llanarmon – Groeslon Ty Newydd | | 1.8 |
| Dos/Class 3 | Groeslon Tŷ Newydd - Cyffordd A499 Lodge Trallwyn | 2.7 | |
| A499/B4417 | A499 Lodge Trallwyn - Cylchfan Allt y Llan, Llanaelhaearn - Sgwar Llithfaen | | 7.3 |
| Di-ddos/ u/c | B4417 Groes Llithfaen - Nant Gwrtheyrn (maes parcio) | 1 | |
| Di-ddos/ u/c | Nant Gwrtheyrn - B4417 Sgwar Llithfaen | | 1 |
| Dos/Class 3 | Sgwar Llithfaen - B4354 Tan y Fron, Pentreuchaf | 4 | |
| Amrywiol/ Various | B4354 Tan y Fron, Pentreuchaf - Y Ffor - Chwilog - Afonwen | | 9.3 |
| | | 39.5 | 26 |

Diweddarwyd/Updated – Hydref/October 2020

Cylchdaith Prif Flaenoriaeth/Main Priority Route D1/4

| Ffordd/Road | Disgrifiad o'r Rhan/Description of Section | Halenu/Salting (km) | Teithio Rhydd/Free Travel (km) |
|--------------------|--|---------------------|--------------------------------|
| Dos/Class 3 | Afonwen i B4354 Chwilog | 0.7 | |
| B4354 | B4354 Chwilog i A499 Y Ffor | | 3.4 |
| A499 | A499 Y Ffor i waelod cyffordd Allt Goch, Penygroes | 17.7 | |
| A499 | Gwaelod Allt Goch i Clynnog | | 5.2 |
| Dos/Class 3 | Clynnog Cyffordd Bryn Ifan - Groes Foel - A499 Pontllyfni | 7.3 | |
| A499 | A499 Pontllyfni - Lôn Newydd, Trefor | | 7.9 |
| Dos/Class 3 | Pentref Trefor | 2.9 | |
| A499 | Penlon Trefor A499 i Gyffordd B4417 Allt y Llan, Llanaelhaearn | | 0.9 |
| B4417 | Allt Llan - Llithfaen - Pistyll - Nefyn | 10.1 | |
| A497 | Nefyn - Bryncynan | 1.6 | |
| B4412 | Bryncynan - Cae Coch - Morfa Nefyn | | 1.5 |
| B4412 | Cae Coch Linksway | 0.5 | |
| Amrywiol/Various | Linksway - B4417 Lon Terfyn - Cae Coch | | 0.7 |
| B4417 | Cae Coch - Nefyn | 2.00 | |
| A497 | Nefyn Bryncynan - Cyffordd B4354 Tan Graig Boduan | | 3.2 |
| B4354 | B4354 Tan Graig - Cyffordd A499 Y Ffor | 9.0 | |
| Amrywiol/Various | Cyffordd A499 Y Ffor - Afonwen | | 4.5 |
| | | 51.9 | 27.3 |



Cylchdaith Prif Flaenoriaeth/Main Priority Route - D1/4

Diweddarwyd/Updated – Hydref/October 2020

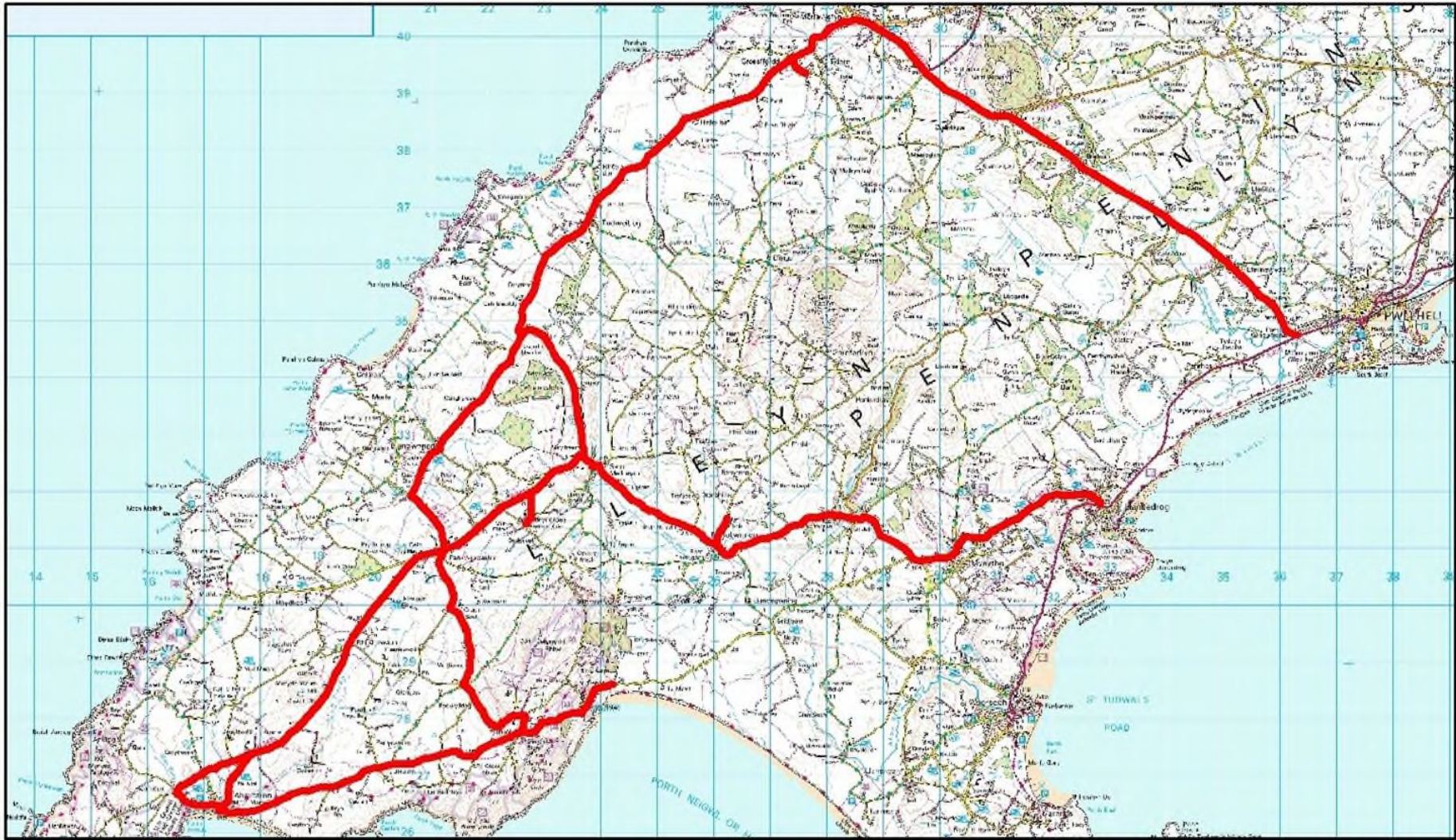
Cylchdaith Prif Flaenoriaeth/Main Priority Route D1/5

| Ffordd/Road | Disgrifiad o'r Rhan/Description of Section | Halenu/Salting (km) | Teithio Rhydd/Free Travel (km) |
|--|--|---------------------|--------------------------------|
| Dos/Class 3 + A497 | Afonwen i A497 Tyrpeg Pulrose | | 8.7 |
| A499 | A497 Tyrpeg Pulrose i Abersoch | 9.8 | |
| A499 | Stryd Fawr, Abersoch | | 0.2 |
| Di-ddos/ u/c Dos/Class 3 + Di-ddos/ u/c | Cyffordd Lôn Gwydryn - Sarn Bach - Bwlchtocyn | 2.5 | |
| Di-ddos/ u/c | Bwlchtocyn i Cyffordd Tan Bryn | | 0.8 |
| Di-ddos/ u/c | Cyffordd Tan Bryn - Cyffordd Erw Deg, Cilan | 1.8 | |
| Di-ddos/ u/c | Cyffordd Erw Deg, Cilan - Sarn Bach | | 2.0 |
| Dos/Class 3+ Di-ddos/ u/c | Sarn Bach-Capel Bwlch-Llanengan-Llangian-Cyffordd Allt Sychnant - Cyffordd Land and Sea, Abersoch | 6.1 | |
| Dos/Class 3 | Cyffordd Land and Sea - Cyffordd Allt Sychnant | | 1.7 |
| Dos/Class 3 | Cyffordd Allt Sychnant - Cyffordd B4413 | 1.6 | |
| B4413 | Cyffordd B4413 - Cyffordd cyntaf i'r Ysgol (ger y maes picnic) | | 0.8 |
| Dos/Class 3 + Di-ddos/ u/c | Cyffordd y maes picnic heibio'r Ysgol i gyffordd y garej | 0.2 | |
| B4413 | Cyffordd y garej i Swyddfa Post Mynytho | | 0.4 |
| Dos/Class 3 | Swyddfa Post Mynytho - Coed y Fron | 1.4 | |
| Dos/Class 3 + B4413 | Coed y Fron - Rhyd Galed | | 1.9 |
| B4415 | Rhydgaled - Pont Inkerman - Felin Newydd | 3.0 | |
| Dos/Class 3 | Felin Newydd - Pont Inkerman | | 1.2 |
| Dos/Class 3 + Di-ddos/ u/c | Pont Inkerman - Dinas - Llaniestyn - Groeslon Tŷ Newydd - Eglwys Botwnnog | 14.9 | |
| Dos/Class 3 | Eglwys Botwnnog - Groeslon Tŷ Newydd | | 2.3 |
| Dos/Class 3 | Groeslon Tŷ Newydd - Penbodlas - Garnfadryn - Glan Beuno | 3.3 | |
| Dos/Class 3 | Glan Beuno - Groeslon Tŷ Newydd - Penbodlas | | 1.6 |
| Dos/Class 3 | Penbodlas - Penygongl | 2.0 | |
| Dos /Class 3 | Penygongl - Bodgadle | | 1.3 |
| B4415 | Bodgadle - Efailnewydd | 4.5 | |
| B4415 | Efailnewydd - Tai'n Lôn (Cyffordd Llannor) | | 0.3 |
| Dos/Class 3 | Tai'n Lôn - Llannor - Pentreuchaf - Tan Fron | 2.9 | |
| Amrywiol/Various | Tan Fron - Ffor - Chwilog - Afonwen | | 9.3 |
| | | 54.0 | 32.5 |



Cylchdaith Prif Flaenoriaeth/Main Priority Route D1/6

| Ffordd/Road | Disgrifiad o'r Rhan/ Description of Section | Halenu/Salting (km) | Teithio Rhydd/Free Travel (km) |
|-----------------------------------|---|----------------------------|---------------------------------------|
| Dos/Class 3 + A497 + A499 | Afonwen i A497 Tyrpeg Pulrose | | 8.7 |
| A497 | A497 Tyrpeg Pulrose i Gylchdro Bryncynan | 8.2 | |
| B4412 + B4417 | Bryncynan - Morfa Nefyn - Cyffordd Lôn Rhos Edern - Ysgol Edern | 3.4 | |
| Di-ddos/ u/c | Ysgol Edern - B4417 | | 0.4 |
| B4417 + Dos/Class 3 | Edern - Beudy Pigin - Sarn Meyllteyrn | 10.1 | |
| Dos/Class 3 | Sarn Mellteyrn - Beudy Pigin | | 3.0 |
| B4417 + B4413 | Beudy Pigin - Pengroeslon | 4.8 | |
| B4413 + Dos/Class 3 | Pengroeslon - Aberdaron - Lôn Uwchmynydd - Minafon - Cyffordd Stad Bro Hywyn | 8.8 | |
| B4413 | Srad Bro Hywyn - Pentref Aberdaron | | 1.2 |
| Dos/Class 3 | Aberdaron - Rhiw - Treheli | 7.9 | |
| Dos/Class 3 | Treheli - Rhiw | | 2.1 |
| Dos/Class 3 + Di-ddos/ u/c | Rhiw - Pengroeslon - Gyffordd Capel Tŷ Mawr - Bryncroes | 7.0 | |
| Dos/Class 3 | Bryncroes - Cyffordd Capel Tŷ Mawr | | 0.6 |
| B4413 | Cyffordd Capel Tŷ Mawr - Botwnnog (Swyddfa'r Post) | 4.2 | |
| Dos/Class 3 | Swyddfa'r Post - Ysgol Botwnnog | 0.5 | |
| Dos/Class 3 | Ysgol Botwnnog - Swyddfa'r Post | | 0.5 |
| B4413 | Botwnnog - Llanbedrog (Cyffordd Glyn y Weddw) | 7.9 | |
| Amrywiol/Various | Llanbedrog - Pwllheli - Afonwen | | 13.1 |
| | | 62.8 | 27.5 |



Cylchdaith Prif Flaenoriaeth – Main Priority Route – D1/6

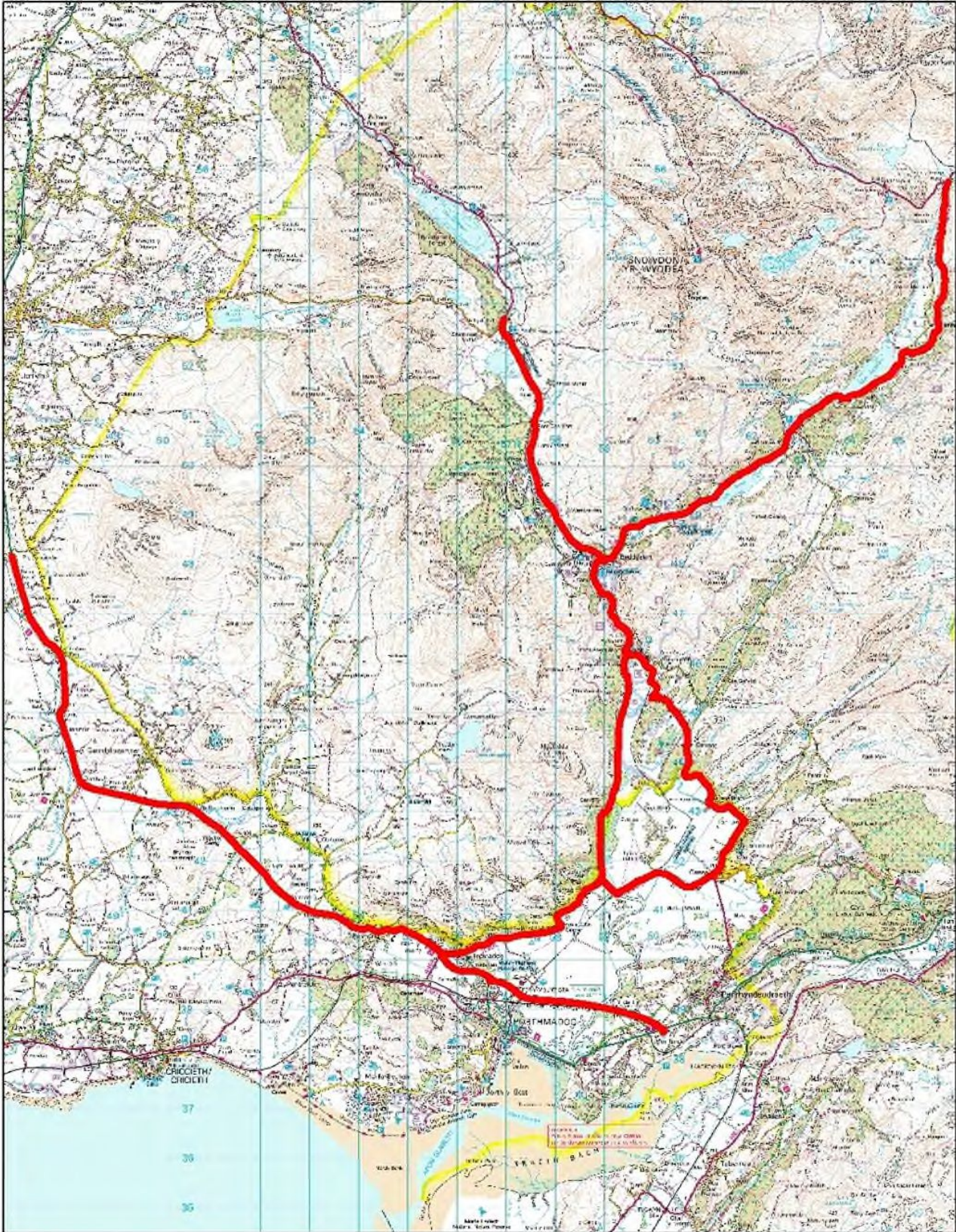
Diweddarwyd/Updated – Hydref/October 2020

Cylchdeithiau Uchel Dwyfor

Dwyfor High Routes

Cylchdaith Uchel/High Route DH/1

| Ffordd/Road | Disgrifiad o'r Rhan/Description of Section | Halenu/Salting (km) | Teithio Rhydd/Free Travel (km) |
|------------------|--|---------------------|--------------------------------|
| Amrywiol/Various | Afonwen - Llanystumdwy - Glandwyfach | | 9.6 |
| A487 | Glandwyfach - Caerau (ffin Dwyfor) | 4.9 | |
| A487 | Caerau (ffin Dwyfor) - Glandwyfach | | 4.9 |
| A487 | Glandwyfach - Cylchfan Minffordd A487 | 13.5 | |
| A497 | Cylchfan Minffordd A487 - Cylchfan Tremadog A497 | | 4.9 |
| A498 | A498 Cylchfan Tremadog - Beddgelert - Penygwryd | 23.3 | |
| A498 | Penygwryd i Beddgelert | | 12 |
| A4085 | Beddgelert - Rhyd Ddu at gyffordd Penygroes B4418 | 5.8 | |
| A4085 + A498 | Rhyd Ddu - Pont Aberglaslyn | | 8.2 |
| A4085 | Bont Aberglaslyn - Nantmor - Garreg - Cyffordd yr A498 Prenteg | 9.4 | |
| Amrywiol/Various | Prenteg - Cylchfan Tremadog - Cyffordd Penamser - Pentrefelin - Criccieth - Depo Afonwen | | 18.1 |
| | | 56.9 | 57.7 |

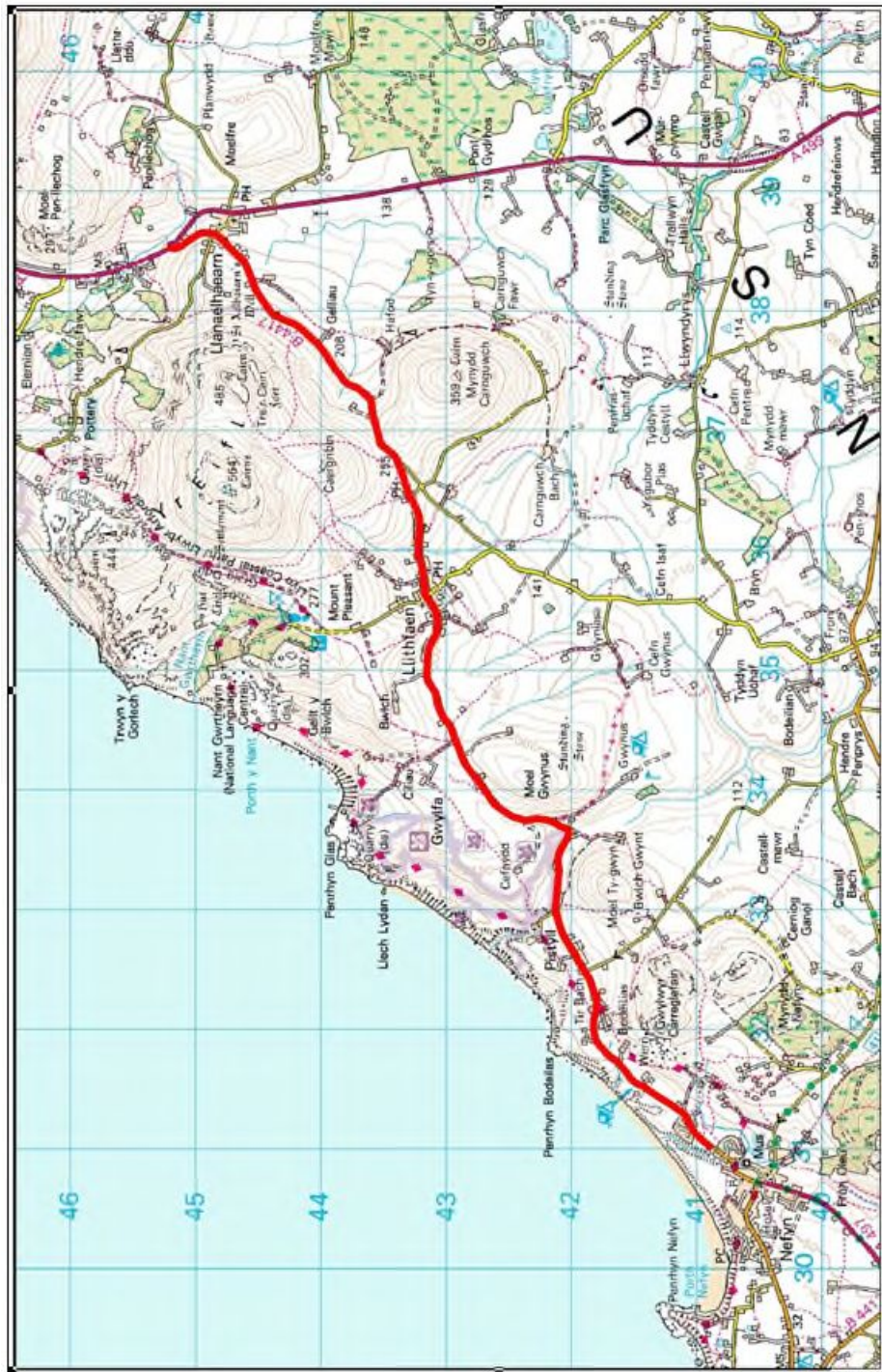


Cylchdaith Uchel / High Route DH/1

yd/Updated – Hydref/October 2020

Cylchdaith Uchel/High Route DH/2

| Ffordd/Road | Disgrifiad o'r Rhan/Description of Section | Halenu/Salting (km) | Teithio Rhydd/Free Travel (km) |
|------------------|---|---------------------|--------------------------------|
| Amrywiol/Various | Afonwen - Y Ffôr - Llanaelhaearn | | 10.7 |
| B4417 | Llanaelhaearn - Llithfaen - 30 Nefyn | 9.7 | |
| Amrywiol/Various | 30 Nefyn - Bryncynan - Boduan -Y Ffôr - Afonwen | | 17.2 |
| | | 9.7 | 27.9 |

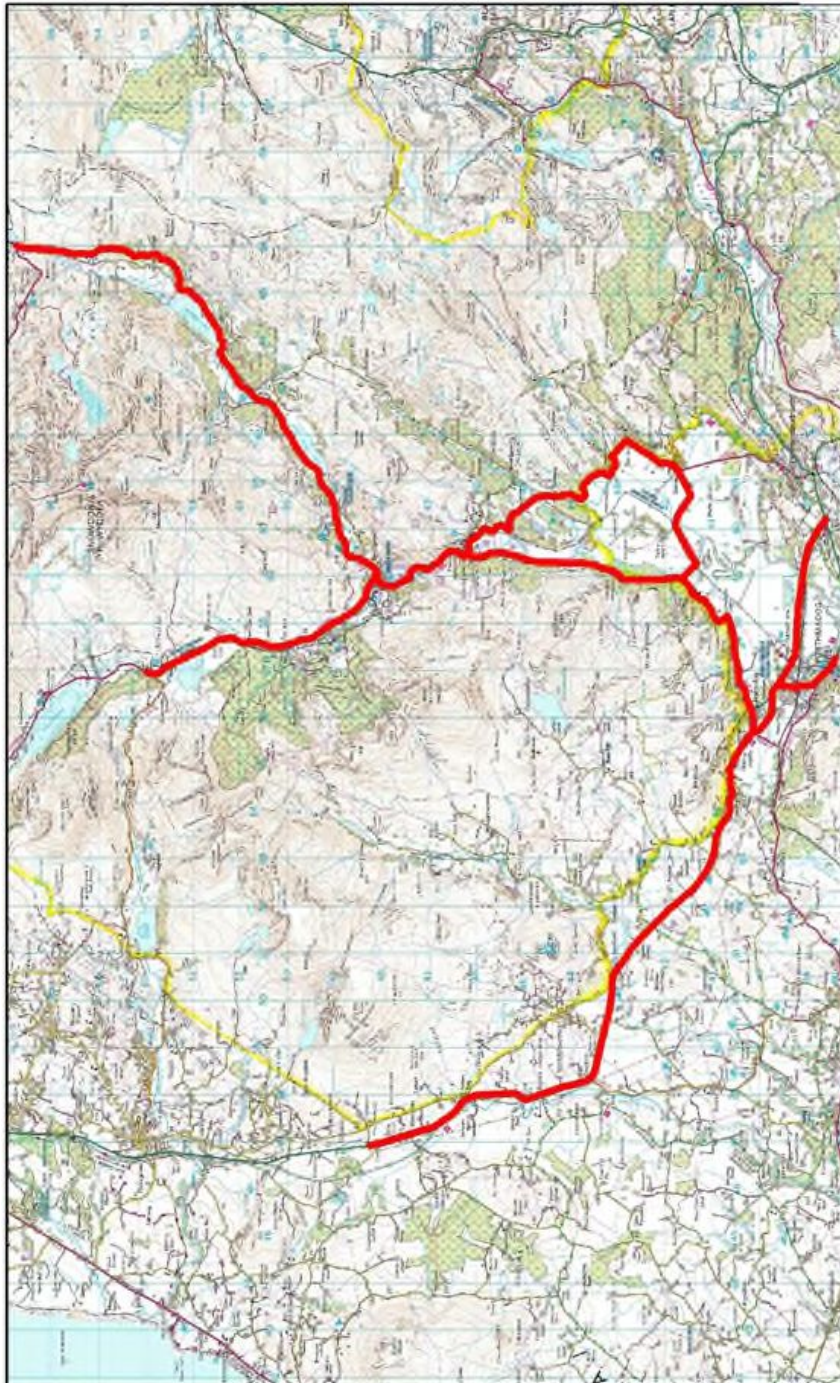


Cylchdaith Uchel/High Route DH/2

Diweddarwyd/Updated – Hydref/October 2020

Cylchdaith Prif Dosbarthwyr/Main Distributor Route – DMD/1

| Ffordd/Road | Disgrifiad Rhan/Description Section | Halenu/Salting (km) | Teithio Rhydd/Free Travel (km) |
|------------------|--|---------------------|--------------------------------|
| Dos/Class 3 | Depo Afonwen - Cylchfan A497 Afonwen | | 0.3 |
| A487 | Cylchfan Afonwen - Tyddyn Sianel - Rhoslan – Cyffordd Glandwyfach A487 | | 2.8 |
| A487 | A487 Glandwyfach - Caerau, Pantglas (ffin Dwyfor) | 4.9 | |
| A487 | A487 Caerau, Pantglas - Glandwyfach | | 4.9 |
| A487 | Glandwyfach - Cylchfan Minffordd A487 | 13.5 | |
| Amrywiol/Various | Cylchfan Minffordd - Tax Office A497 | | 3.2 |
| A497 | Tax Office - Cylchfan Porthmadog A497 | 2.1 | |
| A4971 | Cylchfan Porthmadog A4971 - Cylchfan Bodawen A487 | 0.8 | |
| A487 | Cylchfan Bodawen - Cylchfan Tremadog A498 | | 0.8 |
| A498 | Cylchfan Tremadog A498 - Beddgelert A498 - Cyffordd A4086 Penygwryd | 23.3 | |
| A498 | Cyffordd A4086 Penygwryd - Beddgelert | | 12.2 |
| A4085 | Beddgelert - Rhyd Ddu at Cyffordd B4418 | 5.8 | |
| A4085 + A498 | Rhyd Ddu - Beddgelert - Pont Aberglaslyn | | 8.2 |
| A4085 | Pont Aberglaslyn - Llanfrothen | 6.6 | |
| B4410 | Llanfrothen - Prenteg | 2.7 | |
| A498 + A497 | Prenteg - Cylchfan Tremadog - Cyffordd Penamser - Pentrefelin - Criccieth - Depo Afonwen | | 18.1 |
| | | 59.7 | 50.5 |

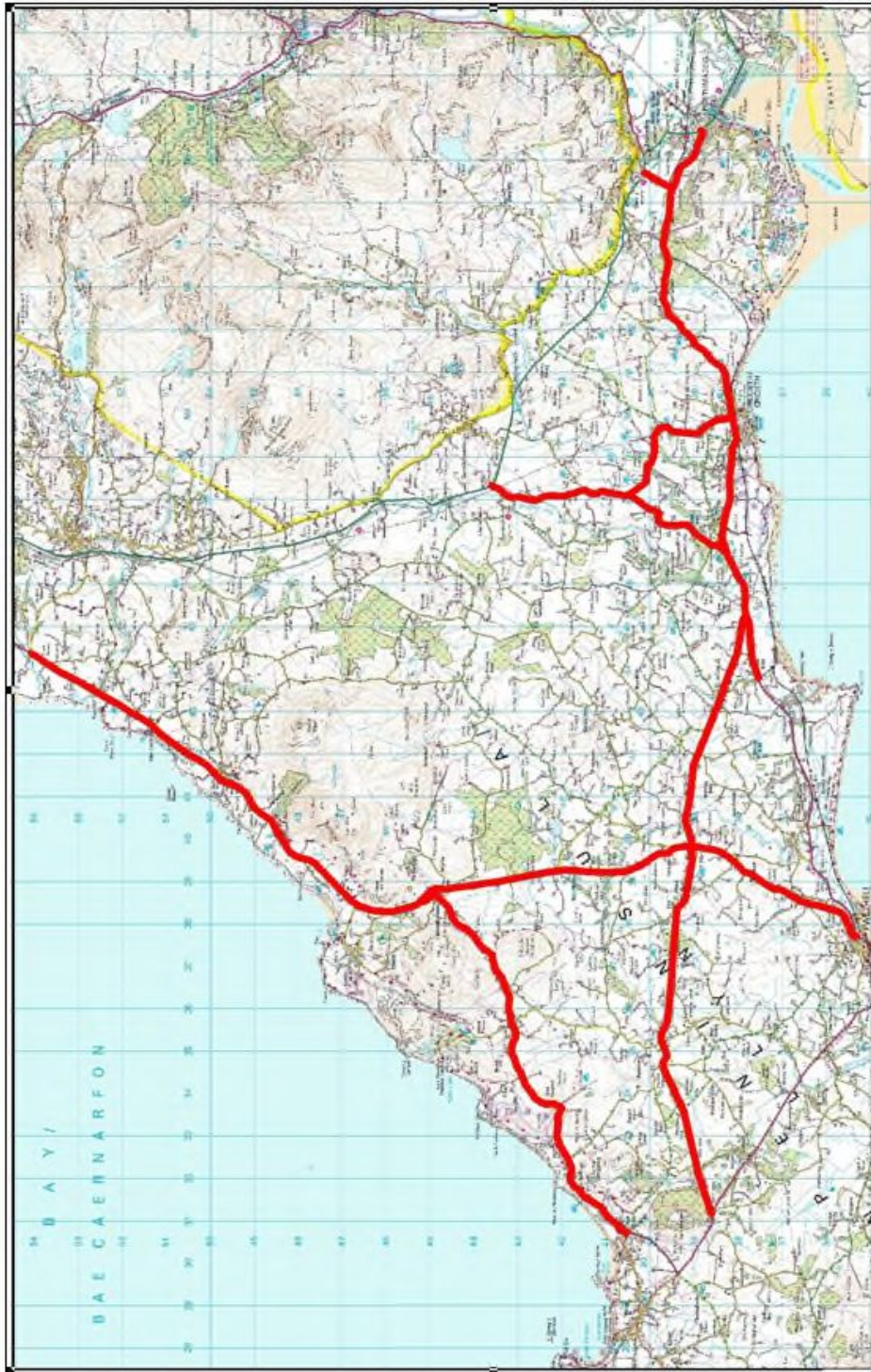


**Cylchdaith Prif Dosbarthwyr/
Main Distributor Route – DMD/1**

Diweddarwyd/Updated – Hydref/October 2020

Cylchdaith Prif Ddosbarthwyr/Main Distributor Route – DMD/2

| Ffordd/Road | Disgrifiad o'r Rhan/Description of Section | Halenu/Salting (km) | Teithio Rhydd/Free Travel (km) |
|--------------------|--|---------------------|--------------------------------|
| Dos/Class 3 | Depo Afonwen - Cylchfan A497 Afonwen | | 0.3 |
| A487 | Cylchfan A497 Afonwen - Cylchfan Porthmadog | 20.5 | |
| A4971 + A487 | Cylchfan Porthmadog - Cylchfan Bodawen A4971 - Cylchfan Tremadog | | 1.6 |
| A498 | Cylchfan Tremadog A487 - Cyffordd Penamser A498/A497 | 0.7 | |
| A497 | Cyffordd Penamser A487 - Sgwar Criccieth A497 | | 12.6 |
| B4411 | Sgwar Criccieth B4411 - Cyffordd Glandwyfach A487 | 7.1 | |
| B4411 | Glandwyfach - Ynys Heli, Rhoslan | | 3.3 |
| Dos/Class 3 | Ynys Heli, Rhoslan - Cyffordd A497, Tyddyn Sianel | 2.9 | |
| A497 | A497, Tyddyn Sianel - Cylchfan Black Lion, Pwllheli | | 10.1 |
| A499 | Cylchfan Black Lion, Pwllheli - Y Ffor - Cylchfan Llanaelhaearn (cynnwys holl cylchfan Allt y Llan - gwaelod Allt Goch (cynnwys holl o gyffordd Allt Goch)) | 22.4 | |
| A499 | Allt Goch - Cylchfan Allt y Llan, Llanaelhaearn | | 11.2 |
| B4417 | Cylchfan Allt y Llan - Llithfaen - Cylchfan Nefyn | 10.4 | |
| A497 | Cylchfan Nefyn - Bryncynan - Tan y Graig, Boduan | | 3.2 |
| B4354 | Tan y Graig, Boduan - Y Ffor | 9.1 | |
| B4354 | Y Ffor - Chwilog - Modurdy Pandy | 5.8 | |
| A497 + Dos/Class 3 | Modurdy Pandy - Depo Afonwen | | 1.8 |
| | | 78.9 | 44.1 |

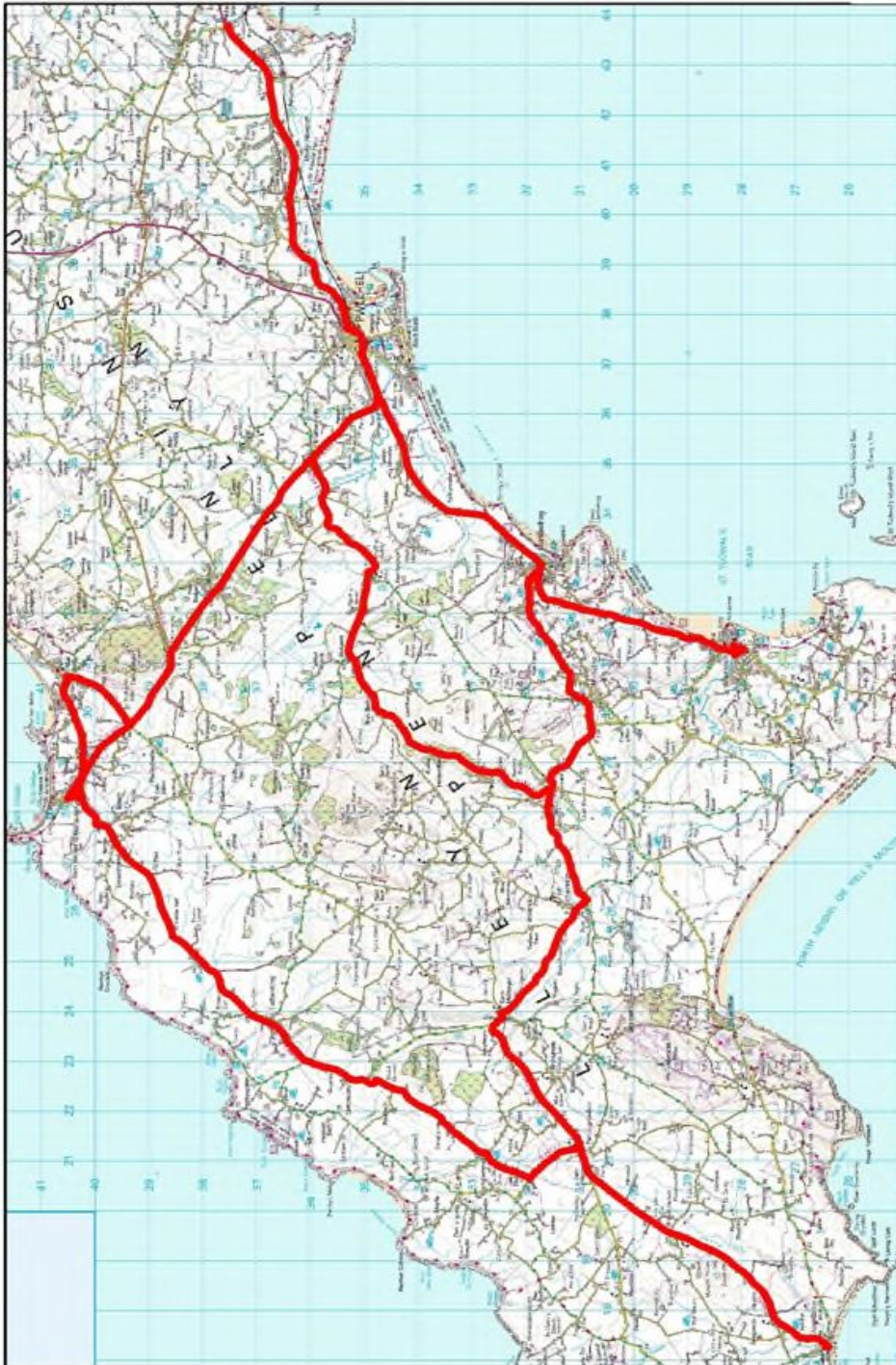


**Cylchdaith Prif Dosbarthwyr/
Main Distributor Route – DMD/2**

Diweddardwyd/Updated – Hydref/October 2020

Cylchdaith Prif Ddosbarth/Main Distributor Route – DMD/3

| Ffordd/Road | Disgrifiad o'r Rhan/Description of Section | Halenu/Salting (km) | Teithio Rhydd/Free Travel (km) |
|---------------------------|--|---------------------|--------------------------------|
| Dos/Class 3 | Depo Afonwen - R'bout A497 Afonwen | | 0.3 |
| A497 | Cylchfan A497 Afonwen (graeau'r 4 cylchfan) - Cylchfan Black Lion, Pwllheli | 6.9 | |
| A497 | Cylchfan Black Lion, Pwllheli - Cylchfan Turnpike, Pwllheli (graeau'r 3 cylchfan) | 1.6 | |
| A499 | Cylchfan Turnpike, Pwllheli - Abersoch (yn cynnwys y sistem unffordd) | 9.9 | |
| A499 | Riverside, Abersoch - Glyn y Weddw, Llanbedrog | | 4.3 |
| B4413 | Glyn y Weddw, Llanbedrog - Pengroeslon - Tŷ Newydd, Aberdaron | 20.5 | |
| B4413 | Tŷ Newydd, Aberdaron - Pengroeslon | | 6.5 |
| B4417 | Pengroeslon - Cae Coch, Morfa Nefyn | 13.8 | |
| B4412 | Cae Coch, Mofra Nefyn - Cylchfan Bryncynan (cynnwys yr holl gylchfan) | 1.4 | |
| A497 | Cylchfan Bryn Cynan - Nefyn | 1.6 | |
| B4417 | Nefyn - Cae Coch, Morfa Nefyn | 2.1 | |
| B4412 +Dos/Class 3 | Cae Coch, Morfa Nefyn - Linksway - Terfyn, Morfa Nefyn | 0.8 | |
| B4417 + B4412 | Terfyn, Morfa Nefyn - Cylchfan Bryn Cynan | | 1.9 |
| A497 | Cylchfan Bryn Cynan - Turnpike, Pwllheli | 8.2 | |
| A497 | Turnpike, Pwllheli - Efailnewydd | | 1.8 |
| B4415 | Efailnewydd - Nanhoron | 9.9 | |
| B4413 + A499 + A497 | Nanhoron - Mynytho - Llanbedrog - Pwllheli - Depo Afonwen | | 19.0 |
| | | 76.7 | 33.8 |



**Cylchdaith Prif Dosbarthwyr/
Main Distributor Route – DMD/3**

Diweddarwyd/Updated – Hydref/October 2020

Atodiad VI (i)/Appendix VI (i)

Llwybrau Graeanu Meirionnydd Meirionnydd Gritting Routes

Diweddarwyd/Updated – Hydref/October 2020

Cylchdaith/Route 1

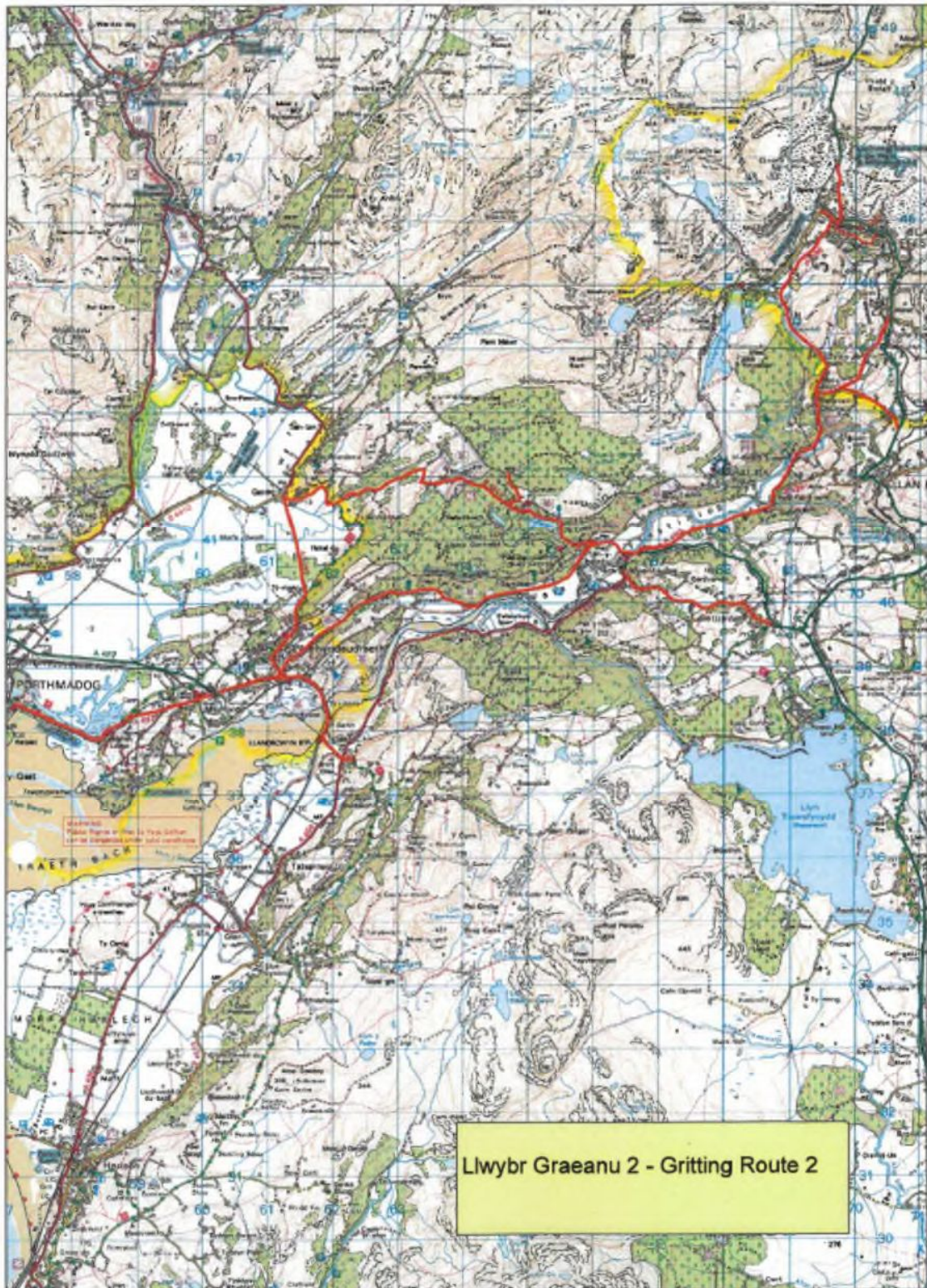
| Disgrifiad o'r Rhan/Description of Section | Halenu/Salting (m) | Teithio Rhydd/Free Travel |
|---|--------------------|---------------------------|
| Depot i Dolwyddelan Square | 7805 | |
| Dolwyddelan to Rhiwbryfdir (including treatment of crawler lane) | 700 | 7329 |
| Rhiwbryfdir to Dolau Las | 2349 | |
| Dolau Las to A470 Commercial Roundabout | | 1641 |
| Commercial Roundabout to Llan Ffestiniog (Pengwern Junction) | 5080 | |
| Pengwern Junction to bottom of Allt Goch | 1848 | |
| Allt Goch to Junction A487 Maentwrog | | 2240 |
| Oakley Drive to Tŷ Nant Junction A470 | 3368 | |
| Tŷ Nant Junction to Migneint Junction Ffestiniog | 4675 | |
| Ffestiniog to Pont yr Afon Gam | 6771 | |
| Pont yr Afon Gam to Ffynnon Eidda | 2714 | |
| Ffynnon Eidda to Pont yr Afon Gam | | 2714 |
| Pont yr afon Gam to Arenig Junction | 6284 | |
| Arenig Junction to Junction A470 Ffestiniog | | 13055 |
| Junction B4391 Migneint to Pengwern Junction | 415 | |
| Pengwern to Depot | | 6452 |
| | 42,009 | 33,404 |



Diweddarwyd/Updated – Hydref/October 2020

Cylchdaith/Route 2

| Ffordd/Road | Disgrifiad o'r Rhan/Description of Section | Halenu/Salting (m) | Teithio Rhydd/Free Travel |
|-------------|--|--------------------|---------------------------|
| A470 | Junction Depot to Roundabout (Including roundabout) | 755 | |
| A496 | Roundabout to Junction A487 bottom of Oakley Drive | 7779 | |
| A487 | Junction A496 Oakley Drive to Tax Office Porthmadog (including A497 Minffordd) | 10810 | |
| A487/A497 | Tax Office Porthmadog to Surgery Penrhyndeudraeth | | 4158 |
| Dos/Class 3 | Surgery to Llandecwyn including Pont Briwet and reverse up Bryn Eithin | 2750 | |
| Dos/Class 3 | Llandecwyn to Station Penrhyndeudraeth | | 2000 |
| Dos/Class 3 | Sation Penrhyndeudraeth to junction A487 Cambrian View | 130 | |
| A4085 | Penrhyndeudraeth to Llanfrothen | 3045 | |
| B4410 | Llanfrothen to junction A487 Oakeley Arms (including slope to Morfa Gaseg, section of Roman Road up to Forestry track and Bus pull-in Oakeley Arms | 6583 | |
| A487 | Junction B4410 to Junction A496 | | 583 |
| A496 | Junction A487 to Junction Old Road Gellilydan | | 347 |
| Dos/Class 3 | Old Road Gellilydan to Junction A487 | 2695 | |
| A487 | Gellilydan Junction to A470 Tŷ nant | | 480 |
| A470 | Tŷ Nant to Bryn Rhyg Junction | | 5610 |
| Dos/Class 3 | Bryn Rhyg to Ceunant Sych | 1248 | |
| Dos/Class 3 | From Junction A496 Cymerau to Wynnes Arms Manod | 1816 | |
| Dos/Class 3 | Access Police Station Blaenau | 210 | |
| A470 | Police Station to Wynne Road | | 260 |
| Dos/Class 3 | Wynne Road/ Tywyn Road to Junction A496 | 953 | |
| Dos/Class 3 | North Western Road to Tap | 207 | |
| Dos/Class 3 | Tap to Depot | | 665 |
| | | 38,909 | 14,103 |



Diweddarwyd/Updated – Hydref/October 2020

Cylchdaith/Route 3

| Ffordd/Road | Disgrifiad o'r Rhan/Description of Section | Halenu/Salting (m) | Teithio Rhydd/Free Travel |
|--------------------|--|--------------------|---------------------------|
| A470 | Depot to Roundabout | | 755 |
| A470 | Roundabout to Tŷ Nant | | 9755 |
| A470 | Tŷ Nant Junction to Toilet car park Ganllwyd including Power Station entrance | 16239 | |
| A470 | Ganllwyd car park to Fron Olau Junction | | 10917 |
| Dos/Class 3 | Fron Olau to Tŷ'n Pistyll | 1050 | |
| Dos/Class 3 | Tŷ'n Pistyll, Station , Junction A4212 | 925 | |
| A4212 | Junction Station to A470 Junction | | 850 |
| A470 | A4212 Junction to Junction Tŷ'n Pistyll | | 289 |
| Dos/Class 3 | Junction Tŷ'n Pistyll to Glasfryn Trawsfynydd | | 268 |
| Dos/Class 3 | Glasfryn to Frongaled | 480 | |
| A470 | Frongaled to Junction A496 Maentwrog | | 7611 |
| A496 | Maentwrog to Glanywern | 9617 | |
| B4573 | Glanywern to Top St David's Hill A496 Junction | 6234 | |
| A496 | Top St David's Hill to Castle Villa | 855 | |
| Dos/Class 3 | Castle Villa to Ysgol Tan y Castell | 560 | |
| Dos/Class 3 | Ysgol Tan y Castell to Castle Villa | | 560 |
| A496 | Castle Villa to Glan y Wern | 5611 | |
| A496 | Glan y wern to Tollgate Cottage, Maentwrog | | 9555 |
| A496 | Tollgate Cottage to Junction A487 | 72 | |
| A487 | Pont Maentwrog to Junction A496 | | 220 |
| A496 | Junction A487 Maentwrog to Commercial Roundabout | | 7282 |
| A470 | Commercial Roundabout to Depot | | 755 |
| | | 41,643 | 48,871 |



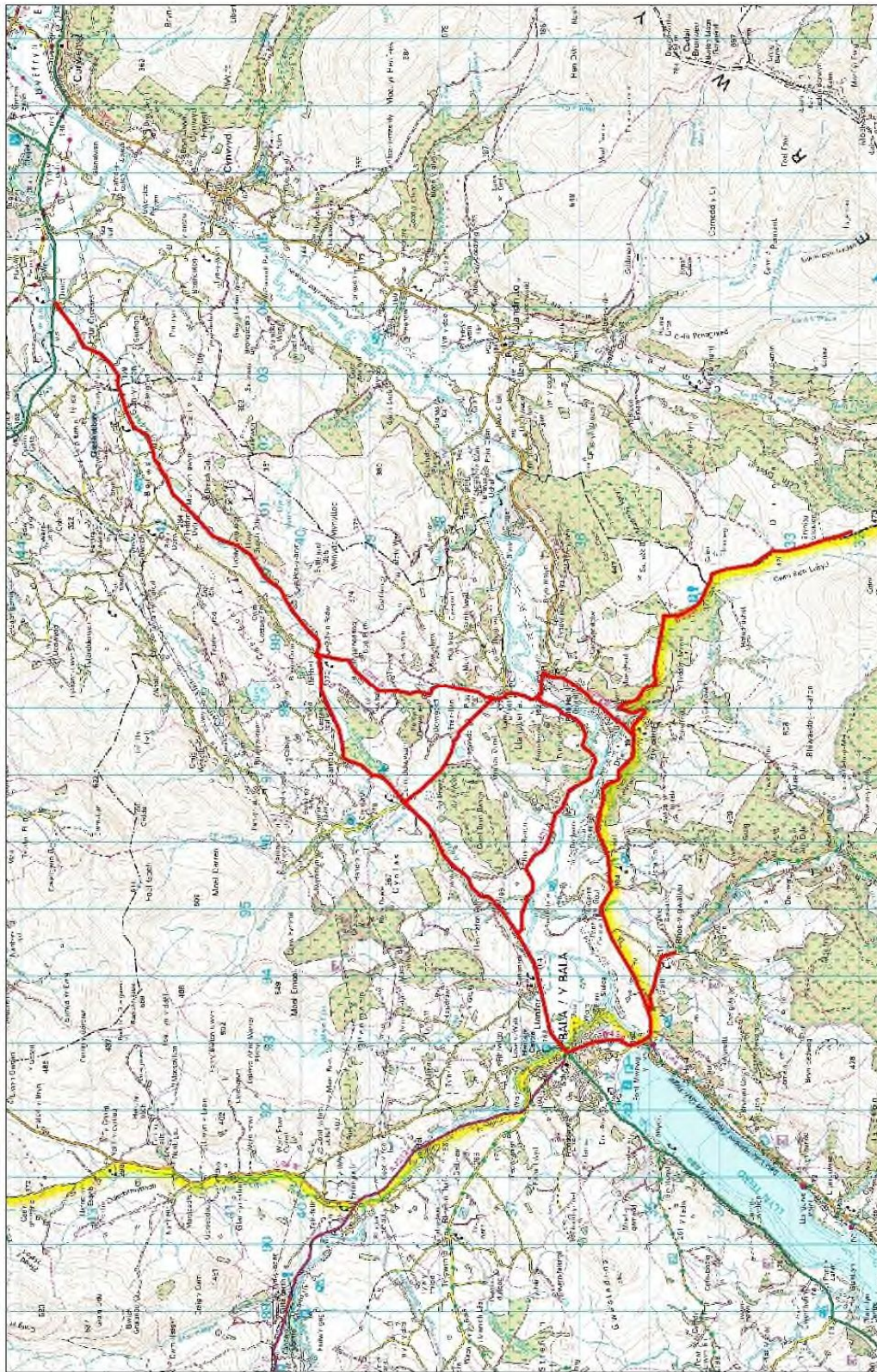
Diweddardwyd/Updated – Hydref/October 2020

Cylchdaith/Route 4

| Ffordd/Road | Disgrifiad o'r Rhan/Description of Section | Halenu/Salting (m) | Teithio Rhydd/Free Travel |
|--------------------|--|--------------------|---------------------------|
| B4391 | Salt Barn Bala - A494 Junc | 1380 | |
| A4212 | A4212 - Trawsfynydd | 28420 | |
| A470 | Junc A4212 - Top Entrance + return | | 1150 |
| A470 | Filter Lane | 120 | |
| A4212 | Trawsfynydd - Arenig Junc | | 12515 |
| Dos/Class 3 | Arenig Junc - Junc Ffrydan Road, Bala | 11920 | |
| A4212 | Ffrydan Road, Bala - Frongoch | | 2965 |
| B4501 | Frongoch - Gellioedd | 6431 | |
| B4501 | Gellioedd - Frongoch | | 7071 |
| A4212 | Frongoch - A494 Junct Bala | | 3990 |
| B4391 | A494 Junc Bala - Depot | | 410 |
| | | 48,271 | 28,101 |

Cylchdaith/Route 5

| Ffordd/Road | Disgrifiad o'r Rhan/Description of Section | Halenu/Salting (m) | Teithio Rhydd/Free travel |
|-------------|--|--------------------|---------------------------|
| Di-ddos/U/C | Depot Bala - B4391 | 169 | |
| Dos/Class 3 | B4391 - A494 | 193 | |
| A494 | A494 Bala - Druid A5 | 14244 | |
| A494 | Druid A5 - Bethel | | 6832 |
| B4402 | Bethel - Llandderfel | 2902 | |
| B4402 | Llanddefel - Cof Golofn | 714 | |
| B4402 | Cof Golofn - Llandderfel | | 714 |
| Dos/Class 3 | Llandderfel - Ysgol Ffridd y Llyn | 1830 | |
| Dos/Class 3 | Ysgol Ffridd y Llyn - Cefnddwysarn | 300 | |
| A494 | Cefnddwysarn - Melin Meloch | | 2633 |
| B4401 | Melin Meloch - Bryn Tirion | 4866 | |
| B4402 | Bryn Tirion - Berwyn | 1622 | |
| B4391 | Berwyn - Denbighshire | 3591 | |
| B4391 | Denbighshire - Powys | 4377 | |
| B4391 | Powys - Gwynedd | | 4377 |
| B4391 | Gwynedd - Junction B4402 | | 3591 |
| B4391 | Junction B4402 - Junction Rhosygwaliau | 4685 | |
| Dos/Class 3 | Junction Rhosygwaliau - Rhosygwaliau | 1173 | |
| Dos/Class 3 | Rhosygwaliau - B4391 Berwyn | | 2173 |
| Dos/Class 3 | Junction Rhosygwaliau - Junction Industrial Estate | 1483 | |
| Dos/Class 3 | B4391 - Bala Depot | | 169 |
| | | 42,149 | 20,489 |



1:50,000
 Ordnance Survey
 OS Licence No. 100019162
 © Crown Copyright 2019
 All rights reserved.

Lwybr Graeanu 5 - Gritting Route 5



OS Licence No. 100019162
 © Crown Copyright 2019
 All rights reserved.

Cylchdaith/Route 6

| Ffordd/Road | Disgrifiad o'r Rhan/Description of Section | Halenu/Salting (m) | Teithio Rhydd/Free travel |
|--------------------|--|--------------------|---------------------------|
| B4391 | Bala Depot to Junction A494 | | 362 |
| A494 | Junction A494/B4391 to Junction A470 Dolgellau By-Pass | 28339 | |
| A494 | A470 Dolgellau By Pass to Junction Aran Hall School | | 7300 |
| Di-ddos/U/C | Aran Hall School | 881 | |
| Di-ddos/U/C | Aran Hall School to Junction A494 | | 881 |
| A494 | Aran Hall Junction to Rhydymain West Junction | | 494 |
| Dos/Class 3 | Rhydymain Village | 450 | |
| A494 | East Entrance, Rhydymain to Junction Class III, Llanycil | | 17700 |
| Dos/Class 3 | Llanycil to Parc to A494 Junction Werngoch | 6518 | |
| A494 | Junction Werngoch to Junction B4403, Llanuwchllyn | | 2867 |
| B4403 | Junc B4403 Llanuwchllyn to Llangower to Junc B4391 Bala | 8499 | |
| B4391 | Junc B4403/B4391 to Depot | | 1018 |
| | | 44,687 | 30,622 |



© Hawffraint y Coron
a hawliau corffia odata 2011
Arwng Ordnans 100023387
© Crown copyright
and database rights 2011
Ordnance Survey 100023387

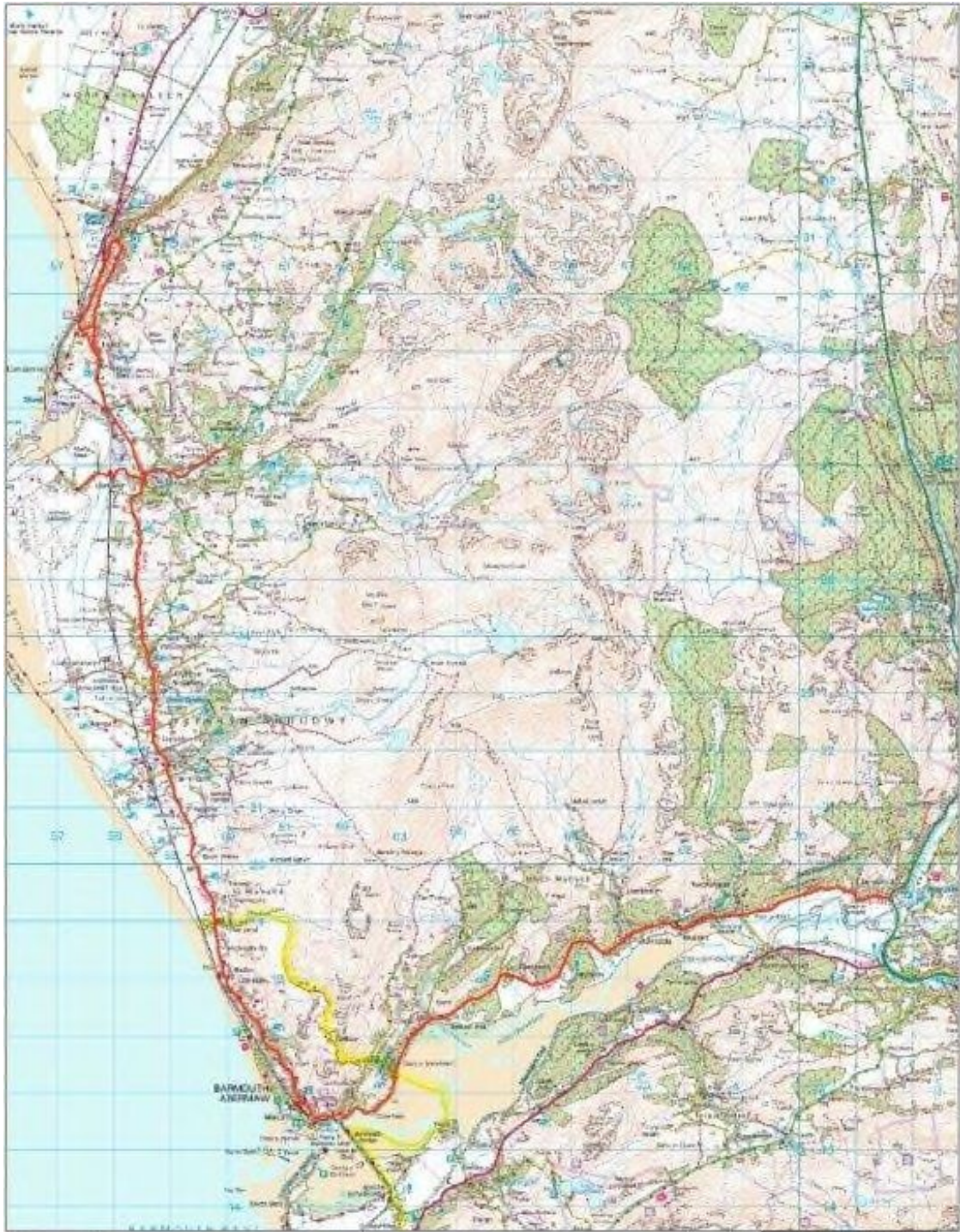
Llwybr Graeanu 6 - Gritting Route 6



Diweddarwyd/Updated – Hydref/October 2020

Cylchdaith/Route 7

| Ffordd/Road | Disgrifiad o'r Rhan/Description of Section | Halenu/Salting (m) | Teithio Rhydd/Free Travel |
|--------------------|--|--------------------|---------------------------|
| A470 | Salt Barn Dolgellau to Llanelltyd Roundabout | | 3957 |
| A496 | Llanelltyd Roundabout to Jubilee Road including High Street | 13022 | |
| A496 | A496 Jubilee Road to Llanbedr Mochras Junc | 12489 | |
| Dos/Class 3 | Mochras to Morfa Mawr | 942 | |
| Dos/Class 3 | Morfa Mawr to A496 Llanbedr | | 942 |
| Dos/Class 3 | A496 Llanbedr to Pont Besar Pentre Gwynfryn | 1905 | |
| Dos/Class 3 | Pont Besar to Llanbedr A496 | | 1840 |
| A496 | A496 Llanbedr to Llanfair (to Frondeg) | 3095 | |
| A496 | Frondeg to St. Davids Harlech | 1195 | |
| A496 | St. Davids into Harlech | | 609 |
| Dos/Class 3 | Harlech to Hengeau Junc | 1529 | |
| Dos/Class 3 | Hengeau to Top Road Llanfair | | 664 |
| Dos/Class 3 | Top Road Llanfair Junc to X Roads Junc | 160 | |
| Dos/Class 3 | Cross Roads Jnct to A496 Junc | | 201 |
| A496 | A496 Frondeg to Bottom Junc | 514 | |
| A496 | A496 Llanfair to Dolgellau Depot | | 28672 |
| | | 34,851 | 36,885 |



Llwybr Graeanu 7 - Gritting Route 7

© Hawlfraint y Geron
a hysbysu cronfa ddiadau 2011
Arolwg Ordnans 100023367
© Crown copyright
and database rights 2011
Ordnance Survey 100023367

Cylchdaith/Route 8

| Ffordd/Road | Disgrifiad o'r Rhan/Description of Section | Halenu/Salting (m) | Teithio Rhydd/Free Travel |
|--------------------|---|--------------------|---------------------------|
| Dos/Class 3 | Dolgellau Depot to Junc A494 | | 880 |
| A494 | Junc A494 to Junc A470 | | 570 |
| A470 | Junc A470/A494 to Salt Barn | | 620 |
| A470 | Salt Barn to End of Dual Carriageway | 2870 | |
| A470 | End of By Pass Dual Carriageway - Maes Mawr narrow section (inc roundabout) | 3100 | |
| A470 | Maes Mawr narrow section - Ganllwyd Car Park (Toilets) | 3793 | |
| A470 | Ganllwyd Car Park (toilets) to Bro Cymer Junc. | | 5048 |
| Di-ddos/U/C | Bro Cymer Junc A470 to Bro Cymer 30mph | 182 | |
| Di-ddos/U/C | Bro Cymer (30 mph) to Junc with A470 | | 182 |
| A470 | Junc Bro Cymer A470 to Storehouse | | 1532 |
| A470 | Storehouse A470 to Coleg Meriion A470 | 753 | |
| A470 | Coleg Meirion A470 to Bala jnc A494 (dualc/way) | | 1380 |
| A470 | Bala Junc A494 (dual c/way) to A470 Flyover (by pass) | 234 | |
| A470 | A470 Flyover to Salt Barn A470 | | 435 |
| A470 | Salt Barn to Junc A470/A487 Cross Foxes | | 4002 |
| A487 | A487 Cross Foxes to Blwch Llyn Bach | 3675 | |
| A487 | Bwlch Llyn Bach to Recycling Centre Corris | 8515 | |
| A487 | Recycling Centre to Cross Foxes | | 11063 |
| Dos/Class 3 | Tabor, reverse into Maes Brith entrance Hospital Drive, Hospital, Pen- caeau (inc Hosp Car Park) Uwch y Maes | 5235 | |
| Dos/Class 3 | Pencaeau to Junc Fronserth | | 516 |

Diweddarwyd/Updated – Hydref/October 2020

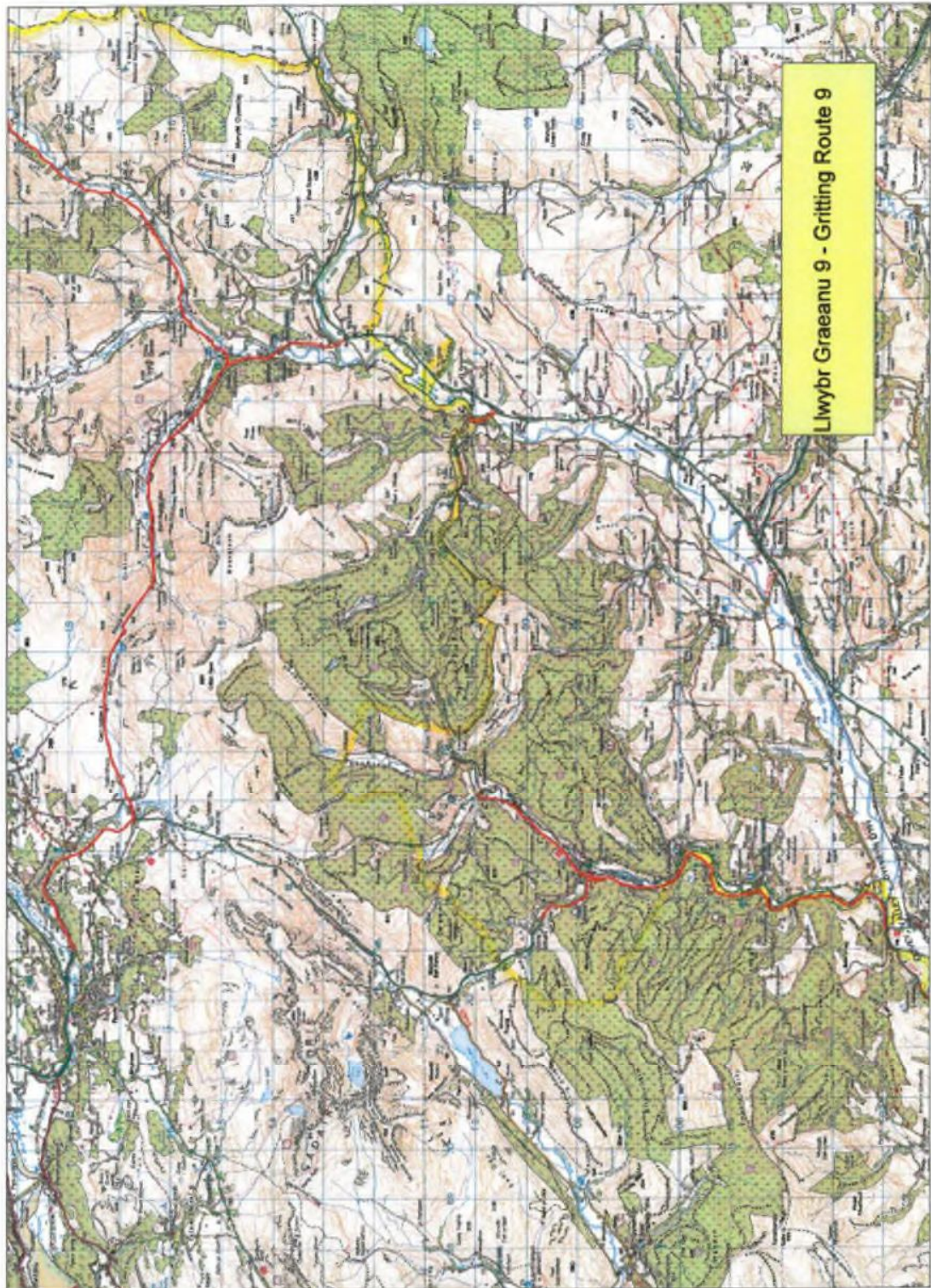
| | | | |
|--------------------|---|---------------|---------------|
| Dos/Class 3 | Junc Fronserth (hospital drive) to Junc A470 Ready Mix | 994 | |
| A470 | Junc A470 Ready Mix to Junc Bala Road A494 | | 471 |
| A494 | A470/A494 Junc To A494 Junc with Cl 3 into Dolgellau | | 570 |
| Dos/Class 3 | Cl 3 Junct with A494 to Junc Llanfachreth | | 880 |
| Dos/Class 3 | Junc Llanfachreth Road/Llanfachreth to Bontnewydd | 9114 | |
| B4416 | Junc A494/B4416 Bontnewydd to Junc A470 Torrent | 3250 | |
| A470 | Junc A470 Torrent to Bala Road Depot | | 4479 |
| | | 41,715 | 32,628 |



Diweddarwyd/Updated – Hydref/October 2020

Cylchdaith/Route 9

| Ffordd/Road | Disgrifiad o'r Rhan/Description of Section | Halenu/Salting (m) | Teithio Rhydd/Free Travel |
|--------------------|---|--------------------|---------------------------|
| A470 | Coed Ffridd Arw to Dinas Mawddwy | 13918 | |
| Dos/Class 3 | Dinas Village to Llanymawddwy CI3 Aberrhiwlas turnaround | 9424 | |
| Dos/Class 3 | Aberrhiwlas to Dinas A470 junction | | 9424 |
| A470 | Dinas Mawddwy to Mallwyd Roundabout | 2478 | |
| A470 | Mallwyd to Aberangell junction | | 3477 |
| Dos/Class 3 | A470 junction to Aberangell Village | 702 | |
| Dos/Class 3 | Aberangell village to A470 | | 702 |
| A470 | Aberangell junction to Machynlleth | | 16380 |
| A487 | Dyfi Bridge to Braich Goch | 7517 | |
| Dos/Class 3 | Braich Goch to Aberllefenni | 3038 | |
| Dos/Class 3 | Aberllefenni to Braich Goch | | 3038 |
| A487 | Braich Goch to Upper Corris Recycling Centre | 1657 | |
| A487 | Upper Corris Recycling Centre to Cross Foxes Junction | | 1232 |
| A470 | Cross Foxes junction to Depot | | 4002 |
| | | 38,915 | 38255 |



Diweddarwyd/Updated – Hydref/October 2020

Cylchdaith/Route 10

| Ffordd/Road | Disgrifiad o'r Rhan/Description of Section | Halenu/Salting (m) | Teithio Rhydd/Free Travel |
|--------------------|--|--------------------|---------------------------|
| Dos/Class 3 | Salt Barn to Crosville Depot | | 915 |
| Dos/Class 3 | Crosville Depot, Arran Road, Eldon Square, One way system Bridge St, Cader Road - Rhydwen, Pandy'r Odyn - Junc A493 | 4123 | |
| A493 | Junc Class 3 / A493 - Junc By Pass | 170 | |
| A470 | A493/By Pass Junc - Llanelltyd Roundabout - College Junc | | 3150 |
| A470 | College Junc + A493 Junc | 150 | |
| A493 | A493/A470 Junc - Tywyn | 30185 | |
| Di-ddos/U/C | Tywyn Urban - Frankwell St, Brook St | 304 | |
| A493 | Tywyn - Brynchrug | | 3680 |
| Dos/Class 3 | Pont Fathew Brynchrug - B4405 | 595 | |
| B4405 | Junc B4405 - B4405/A493 Junc | 633 | |
| A493 | Brynchrug - Llanegryn | | 3030 |
| Dos/Class 3 | A493 Junc Cefn Coch - Peniarth Lodge | 1217 | |
| Dos/Class 3 | Peniarth Lodge - Ty Newydd | | 520 |
| Di-ddos/U/C | Ty Newydd - Primary School | 544 | |
| Di-ddos/U/C | Primary School - Pen-y-Graig | | 192 |
| Di-ddos/U/C | Pen-y-Graig - Cefn Coch | 511 | |
| A493 | A493 Junc Cefn Coch - A493 Junc Fairbourne | | 13670 |
| Di-ddos/U/C | A493 Junc Fairbourne - Station Rd, Belgrave Rd, Stanley Rd, to Beach Rd | 707 | |
| Dos/Class 3 | Beach Road - Junc A493 | | 274 |
| A493 | A493 Junc Fairbourne - A470 By Pass | | 12485 |

Diweddarwyd/Updated – Hydref/October 2020

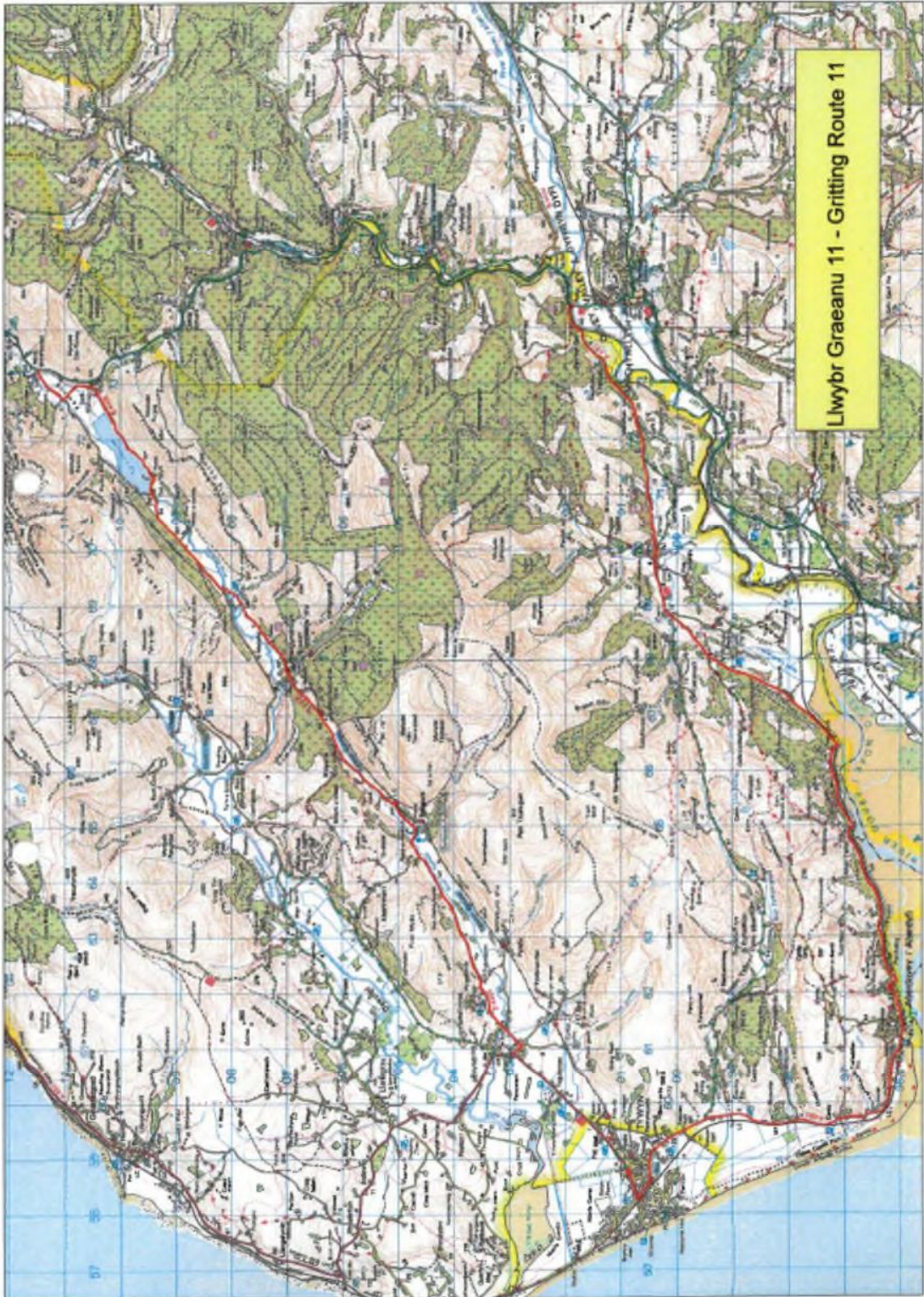
| | | | |
|--------------------|--|--------------|--------------|
| A470 | A493 Junc - Class 3 Junc College, By Pass | | 350 |
| Dos/Class 3 | College Junc Barmouth Road - Bont Fawr check Footbridge | 1330 | |
| Dos/Class 3 | Smithfield St, Eldon Square, Bridge Street, Bont Fawr | | 455 |
| Di-ddos/U/C | Penycefn Road | 641 | |
| Dos/Class 3 | Penycefn Road, Bala Road - Depot | | 1250 |
| | | 39542 | 39971 |



Diweddardwyd/Updated – Hydref/October 2020

Cylchdaith/Route 11

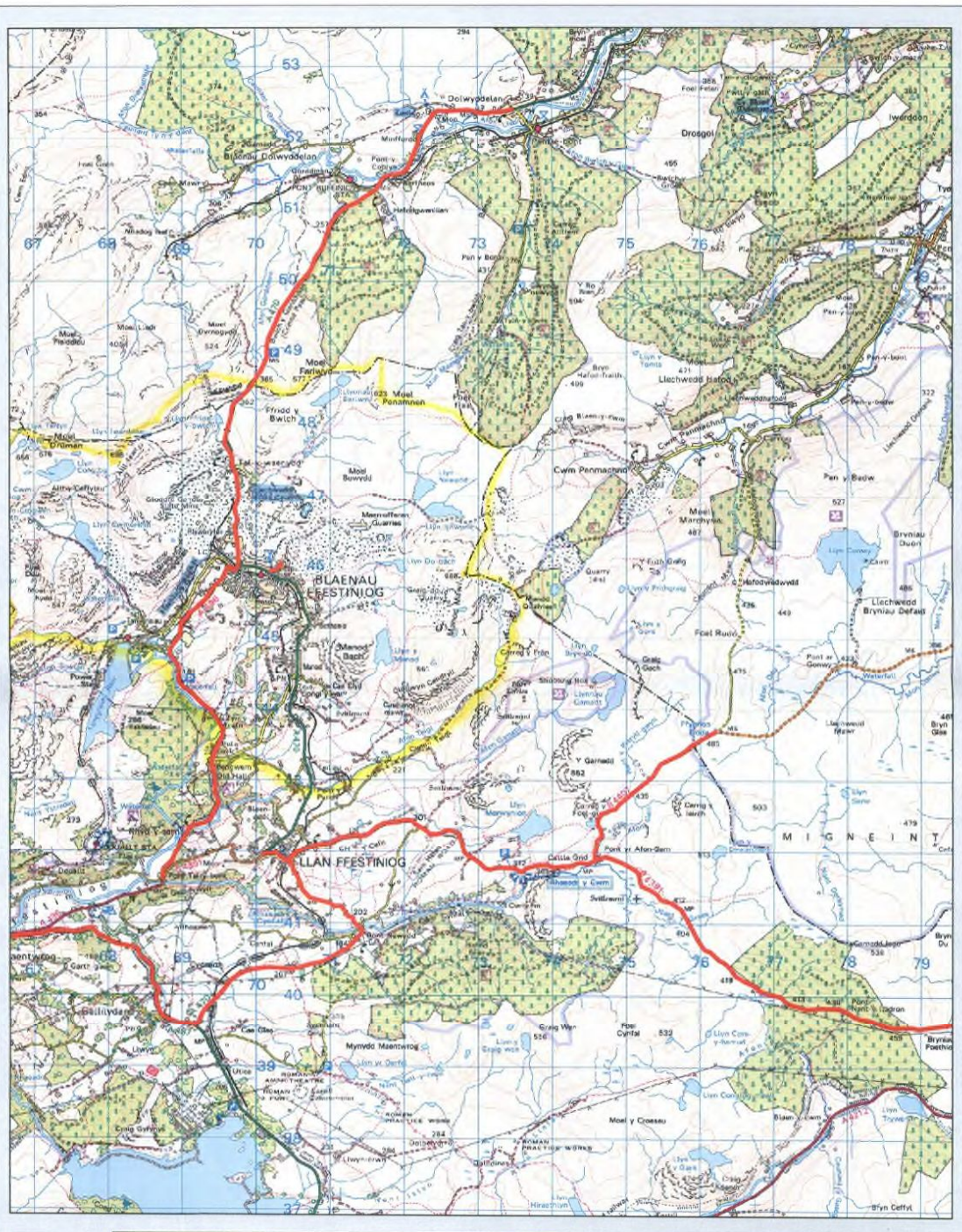
| Ffordd/Road | Disgrifiad o'r Rhan/Description of Section | Halenu/Salting (m) | Teithio Rhydd/Free Travel |
|--------------------|--|--------------------|---------------------------|
| A493 | Tywyn Depot - College Green, High St, Station Rd to Dyfi Bridge | 22093 | |
| A487 | Dyfi Bridge to Junction A487 Cross Foxes | | 20280 |
| A470 | Cross Foxes to Coed Ffridd Arw | | 4002 |
| A470 | Coed Ffridd Arw to Cross Foxes | | 4002 |
| A487 | Cross Foxes to Minfford Tal y Llyn | | 7998 |
| B4405 | Minffordd Junction to Brynchrug | 15555 | |
| A493 | Brynchrug to Pendre Industrial Estate | | 2339 |
| Di-ddos/U/C | A493 Junction Pendre Industrial Estate to Fire Station | 230 | |
| Di/ddos/U/C | Fire Station to A493 Junction | | 230 |
| A493 | Pendre Industrial Estate to Tywyn Depot | | 3666 |
| | | 37,878 | 42,517 |



Diweddardwyd/Updated – Hydref/October 2020

Cylchdaith/Route 12 (Ucheldir/High Routes)

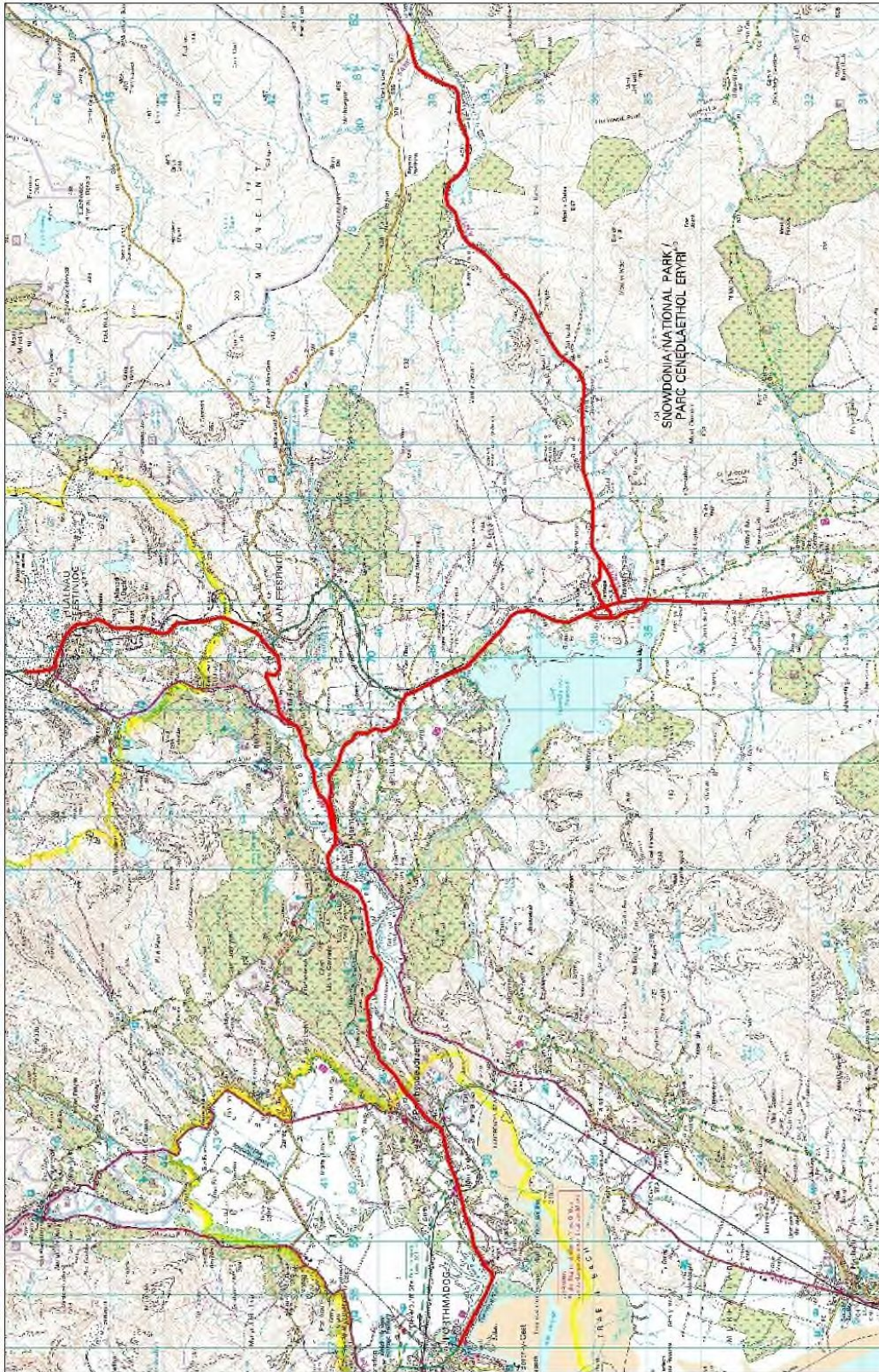
| Ffordd/Road | Disgrifiad o'r Rhan/Description of Section | Halenu/Salting (m) | Teithio Rhydd/Free Travel |
|--------------|---|--------------------|---------------------------|
| A470 | Junction of Depot to Square, Dolwyddelan | 7805 | |
| A470 | Dolwyddelan to Roundabout (inc 600 m treatment on crawler lane and entrances to Talywaenydd and Llechwedd) | 700 | 7960 |
| A496 | Roundabout to Talybont Junction, B4391 Allt Goch | 5931 | |
| A496 | Junction B4391 Talybont to Junction A487 Oakeley Drive | | 1848 |
| A487 | Junction A496 bottom Oakeley Drive to Junction A470 Ty Nant | 3369 | |
| A470 | Ty Nant to Junction B4391 Abbey Arms, Llan Ffestiniog | 4675 | |
| A470 | Abbey Arms to Junction B4391 Migneint | | 415 |
| B4391 | Junction A470 to Junction A4212 Arenig | 13055 | |
| B4391 | Junction A4212 Arenig to Junction B4407 Pont yr Afon Gam | | 6284 |
| B4407 | Pont yr Afon Gam to Ffynnon Eidda | 2714 | |
| B4407 | Ffynnon Eidda to Pont yr Afon Gam | | 2714 |
| B4391 | Pont yr Afon Gam to Junction A470 Llan Ffestiniog | | 6771 |
| A470 | Junction B4391 Llan Ffestiniog to Depot (inc access up to Police Station Dolgarregddu) | 210 | 6343 |
| | | 38459 | 32335 |



Llwybr Graeanu 12 - Gritting Route 12

Cylchdaith/Route 13 (Ucheldir/High Routes)

| Ffordd/Road | Disgrifiad o'r Rhan/Description of Section | Halenu/Salting (m) | Teithio Rhydd/Free Travel |
|-------------|--|--------------------|---------------------------|
| A470 | Junction of Depot to Roundabout (including roundabout) | 755 | |
| A470 | Roundabout to Abbey Arms, Llan Ffestiniog | 5080 | |
| B4391 | Allt Goch | 1848 | |
| A496 | Junction B4391 Allt Goch to Junction A487 Bottom Oakeley Drive | 2251 | |
| A487 | Junction A496 Bottom Oakeley Drive to Tax Office, Porthmadog | 10820 | |
| A487 | Tax Office to Junction A470 Ty Nant | | 14189 |
| A470 | Junction Ty Nant to Bronaber | 8608 | |
| A470 | Bronaber - Fron Oleu Junction, Trawsfynydd | | 3276 |
| Dos/Class 3 | Fron Oleu - Ty'n Pistyll | 1050 | |
| Dos/Class 3 | Ty'n Pistyll - Stesion A4212 | 925 | |
| A4212 | Junction Stesion to Junction A470 | 850 | |
| A470 | Junction A4212 to Junction Ty'n Pistyll | | 289 |
| Dos/Class 3 | Junction Ty'n Pistyll - Glasfryn, Trawsfynydd | | 268 |
| Dos/Class 3 | Glasfryn - Frongaled | 480 | |
| A470 | Frongaled - Junction A4212 (salt filter lane) | 200 | 450 |
| A4212 | Junction A470 Trawsfynydd to Junction B4391 Arenig (minus length already salted) | 12165 | 850 |
| B4391 | Junction Arenig to Junction A470, Llan Ffestiniog | | 13055 |
| A470 | Junction B4391 Llan Ffestiniog to Depot | | 6343 |
| | | 45032 | 38720 |



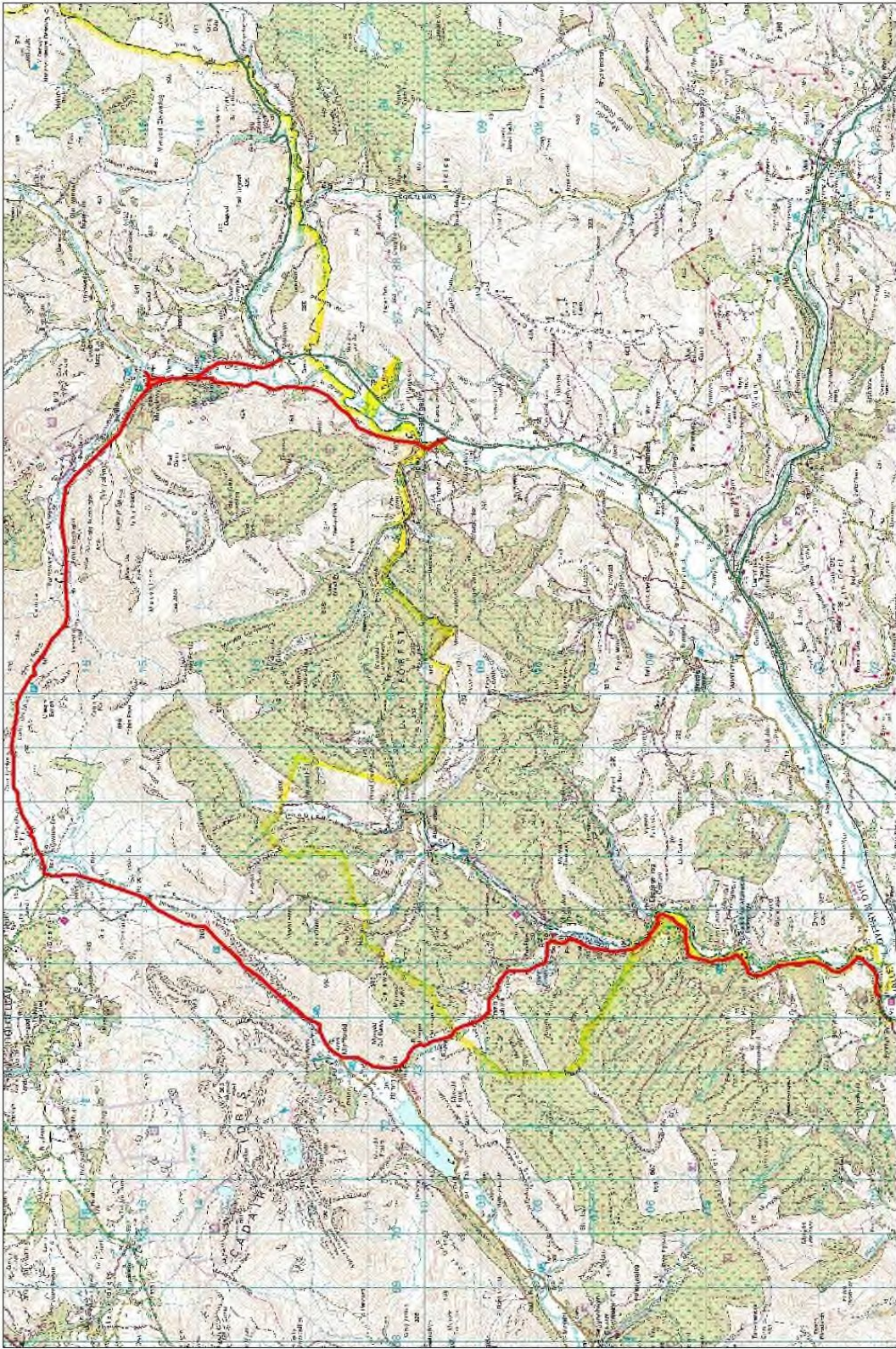
Llwybr Graeanu 13 - Gritting Route 13



© Crown Copyright. Osprey, Ordnance Survey, 100022222

Cylchdaith/Route 14 (Ucheldir/High Routes)

| Ffordd/Road | Disgrifiad o'r Rhan/Description of Section | Halenu/Salting (m) | Teithio Rhydd/Free Travel |
|--------------------|--|--------------------|---------------------------|
| Dos/Class 3 | Bala Road Depot to junc A494 | | 880 |
| A470 | Junct A494 to Junct A487 Cross Foxes | | 4402 |
| A487 | Cross Foxes Junction - Bwlch Llyn Bach | 3675 | |
| A487 | Bwlch Llyn Bach - Dyfi Bridge | 16730 | |
| A470 | Dyfi Bridge - Aberangell Junction | | 16100 |
| Dos/Class 3 | Aberangell Junction - Junction A470 Minllyn | 4866 | |
| A470 | Junction A470 Minllyn - Mallwyd Roundabout | 1675 | |
| A470 | Mallwyd Roundabout - Minllyn | | 1675 |
| A470 | Minllyn - Junction Dinas Mawddwy | 450 | |
| A470 | Old Garage – Beyond Dolhir Lodge | 1425 | |
| Dos/Class 3 | Junction Dinas Mawddwy - Red Lion Junction | | 495 |
| Dos/Class 3 | Red Lion Junction - A470 (Wylecop St) | 210 | |
| A470 | Dolhir Lodge – Penantigi Isaf | 3420 | |
| A470 | Penantigi Isaf – Cross Foxes junction | 5516 | |
| A470 | Cross Foxes Junction - Depot | | 4882 |
| | | 37970 | 24034 |



Llwybr Graeanu 14 - Gritting Route 14



© Crown Copyright. Ordnance Survey. 100019222

Cylchdaith/Route 15 (Ucheldir/High Routes)

| Ffordd/Road | Disgrifiad o'r Rhan/Description of Section | Halenu/Salting (m) | Teithio Rhydd/Free Travel |
|--------------------|--|--------------------|---------------------------|
| B4391 | Salt Barn Bala - A494 Junction | 1380 | |
| A4212 | A494 Junction - Junction Arenig | 15905 | |
| Dos/Class 3 | Junction Arenig - Rhyduchaf - Junction Ffrydan Road | 11920 | |
| A4212 | Junction Ffrydan Road - Frongoch | | 2965 |
| B4501 | Frongoch - Gellioedd Chapel | 6431 | |
| B4501 | Gellioedd Capel - Frongoch | | 7071 |
| A4212 | Frongoch - Junction A494 Bala | | 3990 |
| B4391 | A494 Junction Bala - Berwyn | 14136 | |
| B4391 | Berwyn - Junction towards Bryntirion | | 7968 |
| B4402 | Junction - Bryntirion | 1622 | |
| B4401 | Bryntirion to A494 Melin Meloch | 4866 | |
| A494 | Melin Meloch to Bala | | 1980 |
| B4391 | A494 Junction - Depot | | 410 |
| | | 56260 | 24384 |

Cylchdaith/Route 16 (Ucheldir/High Routes)

| Ffordd/Road | Disgrifiad o'r Rhan/Description of Section | Halenu/Salting (m) | Teithio Rhydd/Free Travel |
|--------------------|---|--------------------|---------------------------|
| Di-ddos/U/C | Bala Depot – B4391 | 169 | |
| B4391 | B4391 – A494 | | 193 |
| A494 | Bala – Dolgellau By Pass | 28339 | |
| A494 | Dolgellau By Pass – Junction U/C road Aran Hall | | 7794 |
| Di-ddos/U/C | Aran Hall | 881 | |
| Di-ddos/U/C | Aran Hall | | 881 |
| A494 | Aran Hall Junction to Bala | | 20545 |
| A494 | Bala - Druids | 14244 | |
| A494 | Druids to Junction Ysgol Ffridd y Llyn | | 9451 |
| Dos/Class 3 | A494 – Ysgol Ffridd y Llyn | 238 | |
| Dos/Class 3 | Ysgol Ffridd y Llyn – A494 | | 238 |
| A494 | Cefn Ddwysarn - Bala | | 4793 |
| B4391 | A494 - Depot | | 193 |
| | | 43871 | 44257 |



© Hawlfraint y Goron
a hawliau cronfa o'dda 2011
Arolwg Ordnans 100023387

© Crown copyright
and database rights 2011
Ordnance Survey 100023387

Llwybr Graeanu 16 - Gritting Route 16



Cylchdaith/Route 17 (Ucheldir/High Routes)

| Ffordd/Road | Disgrifiad o'r Rhan/Description of Section | Halenu/Salting (m) | Teithio Rhydd/Free Travel |
|--------------------|---|--------------------|---------------------------|
| A470 | Coed Ffridd Arw Depot - Cross Foxes | 4002 | |
| A470 | Cross Foxes - Coed Ffridd Arw | | 4002 |
| A470 | Coed Ffridd Arw - End Dual Carriageway | 2870 | |
| A470 | End Dual Carriageway - Maes Mawr narrow section (including Roundabout) | 3100 | |
| A470 | Maes Mawr narrow section - Bronaber | 11543 | |
| A470 | Bronaber - Storehouse (start Dolgellau By-Pass) | | 14330 |
| A470 | Storehouse - beyond Junction Coleg Meirion | 753 | |
| A470 | Coleg Meirion - A494 Junction | | 1380 |
| A470 | Bala Junction - A470 Fly Over | 234 | |
| Dos/Class 3 | Junction Ready Mix, Arran Road, Eldon Square, Bridge St, Smithfield St, Pandy'r Odyn - Junc A493 | 3470 | |
| A493 | Junction A493 - Junction By Pass | 170 | |
| A470 | A493 Junction (Filter Lanes) | 150 | |
| A470 | A493 Junction - College Junction | | 300 |
| A470 | College Junction (Filter Lanes) | 150 | |
| Dos/Class 3 | College Junction - Barmouth Road, Pont Fawr (check Footbridge) | 1330 | |
| Dos/Class 3 | Smithfield St, Arran Road | | 515 |
| Dos/Class 3 | Hospital Drive, Hospital Car Park, Penycaeau, Uwch y Maes | 1987 | |
| Dos/Class 3 | Penycaeau, Arran Road, Eldon Sq, Bont Fawr | | 1150 |
| Dos/Class 3 | Bont Fawr - Junc A494 (include Slip Roads) | 1175 | |
| A494 | Junc A494 - Bontnewydd | | 3877 |
| B4416 | Bontnewydd - Top Torrent | 3246 | |
| A470 | Top Torrent - Salt Barn | | 2516 |
| | | 33545 | 28070 |



Llwybr Graeanu 17 - Gritting Route 17

© Hawflaint y Geirion
a hawliau corffwrdd 2011
Archw Odrans 100023087
© Crown copyright
and database rights 2011
Ordnance Survey 100023087

Diweddarwyd/Updated – Hydref/October 2020

Cylchdeithiau Prif Dosbarthwyr/Main Distributor Routes 1

| Ffordd/Road | Disgrifiad/Description | Halenu/Salting (m) | Teithio Rhydd/ Free Travel |
|--------------|---|--------------------|----------------------------|
| A470 | Junction Depot to Square Dolwyddelan | 7805 | |
| A470 | Dolwyddelan to Blaenau Depot | | 7805 |
| A470 | Junction Depot to Roundabout | 700 | |
| A496 | Roundabout to Junction A487 Oakley Drive | 8000 | |
| A487 | A487 Oakley Drive to Penrhyndeudraeth Roundabout | 7062 | |
| A487 | Penrhyndeudraeth Roundabout to A4085 Jct Penrhyndeudraeth | | 400 |
| A4085 | Jct A487 Penrhyndeudraeth to Jct B4410 Llanfrothen | 3045 | |
| B4410 | Llanfrothen to Jct A487 Oakeley Arms (Including slope into Morfa Gaseg, and bus stop pull-in Oakeley Arms) | 6583 | |
| A487 | Junction A496 Bottom of Oakley Drive to Junction A470 Ty Nant | 3369 | |
| A470 | Junction Ty Nant to Junction A4212 Trawsfynydd | 5989 | |
| A470 | A4212 Junction to Junction A470 Ty Nant | | 5898 |
| A470 | Junction Ty Nant to Llan Ffestiniog | 5795 | |
| B4391 | Allt Goch | 1848 | |
| B4391 | Bottom Allt Goch to Llan Ffestiniog | | 1848 |
| A470 | Llan Ffestiniog to Depot (including access to Police Station, Dolgarregddu) | 5080 | |
| | | 55,276 | 15951 |



**Cylchdaith Mewndir 1
Inland Route 1**

© Hwlffraint y Goron
a hawliau cronfa ddata 2011
Arolwg Ordnans 100023387

© Crown copyright
and database rights 2011
Ordnance Survey 100023387

Cylchdeithiau Prif Dosbarthwyr/Main Distributor Routes 2

| Ffordd/Road | Disgrifiad/Description | Halenu/Salting (m) | Teithio Rhydd/ Free Travel |
|--------------|---|--------------------|----------------------------|
| B4391 | Salt Barn Bala to A494 Junc | 1380 | |
| A494 | Bala to A470 Dolgellau Roundabout | 28339 | |
| A470 | A470 Dolgellau Roundabout to A4212 Junc Trawsfynydd | | 19348 |
| A4212 | Trawsfynydd to Junc B4501 Frongoch | 23922 | |
| A4212 | Junct B4501 Frongoch to Junct A494 Bala | | 3990 |
| | | 53,641 | 23,338 |



Cylchdaith Mewndir 2
Inland Route 2

© Hwffaint y Goron
a hawliau cronfa ddata 2011
Arolwg Ordnans 100023367
© Crown copyright
and database rights 2011
Ordnance Survey 100023367

Cylchdeithiau Prif Dosbarthwyr/Main Distributor Routes 3

| Ffordd/Road | Disgrifiad/Description | Halenu/Salting (m) | Teithio Rhydd/Free Travel |
|--------------|---|--------------------|---------------------------|
| B4391 | Salt Barn Bala to A494 Junc | | 1380 |
| A494 | Bala to Druids A5 | 14244 | |
| A5 | Druids to Cerrig B4501 | | 15420 |
| B4501 | Gellioedd to Frongoch | 7071 | |
| A4212 | Frongoch to A494 Bala | 3990 | |
| B4391 | Salt Barn Bala to top Berwyn (Including Denbighshire and Powys area) | 14136 | |
| B4391 | Top Berwyn to Bryn Tirion junc | | 7968 |
| B4402 | Berwyn to Bryn Tirion | 1622 | |
| B4402 | Bryn Tirion to Junc A494 Bethel | 3924 | |
| A494 | Bethel to Junct Ty Croes Cefn Ddwysarn | | 2764 |
| Dos/Class 3 | Ty Croes Cefn Ddwysarn to B4402 Junc Llandderfel | | 2050 |
| B4402 | Llandderfel to Bryn Tirion Junc | | 695 |
| B4401 | Bryn Tirion to Melin Meloch | 4866 | |
| A494 | Melin Meloch to Bala Depot | | 3123 |
| | | 49,853 | 33,400 |



**Cylchdaith Mewndir 3
Inland Route 3**

© Hawlfreint y Goron
a hawliau cronta ddata 2011
Arolwg Ordnans 100023387
© Crown copyright
and database rights 2011
Ordnance Survey 100023387

Cylchdeithiau Prif Dosbarthwyr/Main Distributor Routes 4

| Ffordd/Road | Disgrifiad/Description | Halenu/Salting (m) | Teithio Rhydd/Free Travel |
|-------------|--|--------------------|---------------------------|
| A470 | Depot to Junction A487 Cross Foxes | 4402 | |
| A470 | Cross Foxes to Mallwyd Roundabout | 10361 | |
| A470 | Mallwyd to Dyfi Bridge via Cemaes Road | | 18110 |
| A487 | Dyfi Bridge to Cross Foxes | 20405 | |
| A470 | Cross Foxes to A494 Dolgellau Roundabout | | |
| A470 | A494 Dolgellau Roundabout to Junction A4212 Trawsfynydd | 19348 | |
| A470 | A4212 Trawsfynydd to Dolgellau Depot | | 19348 |
| | | 54,516 | 37,458 |



Cylchdaith Mewndir 4
Inland Route 4

© Hawthorn & Gurn
a hysawdronfa ddiada 2011
Arolwg Ordnans 100023067

© Crown copyright
and database rights 2011
Ordnance Survey 100023067

Diweddarwyd/Updated – Hydref/October 2020